

## SC2.2 Badu Island maps



## LEGEND

### EXISTING FACILITIES AND INFRASTRUCTURE

- Camps / Outstations

### BOUNDARIES AND FEATURES

- Waterways
- Direction to the nearest Islands
- Road
- LGA
- Kuki (NW Winds - January to April)
- Sager (SE Winds - May to December)

### PATTERN OF LAND USE

- Township
- Environmental Management and Conservation

### NATURAL ENVIRONMENT

- Fishing Area
- Wetlands
- Water Catchment Area
- Low Lying Land

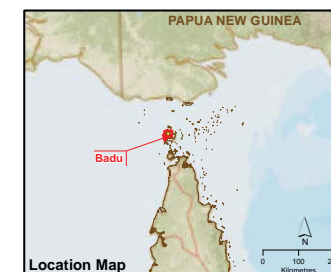
### FUTURE FACILITIES, INFRASTRUCTURE AND ACTIVITIES

- Township Expansion
- Township Centre Core

**Data Sources:**  
Unless stated below all landuse, road, or natural feature data shown is from the Strategic Landuse Plan (SLUP) by the RPS Group 2010.  
**Community Consultation 2013:** Local Names, Places and Identified facilities  
**Queensland Dept. Natural Resources and Environment:** Imagery.  
**LGA Boundaries, Terrain data and Flooding layers**  
**AECOM:** all strategic framework, zoning and local area plan data is modified from the SLUP and DNRM source data.  
**James Cook University:** Coastal Hazard and Coastal Inundation where shown.  
**Location Map Base Data:**  
World Street Map © ESRI Online. Sources: Sources: Esri, HERE, DeLorme, USGS, Intermap, increment P Corp., NRCAN, Esri Japan, METI, Esri China (Hong Kong), Esri (Thailand), TomTom, MapmyIndia, © OpenStreetMap contributors, and the GIS User Community  
**Main Map Base Imagery:**  
BING Service (c) Harris Corp., Earthstar Geographics, LLC Earthstar Geographics SIO © Microsoft Corporation 2014  
**Disclaimer:**  
AECOM does not warrant the accuracy or completeness of information displayed in this map and any person using it does so at their own risk. AECOM shall bear no responsibility or liability for any errors, faults, defects, or omissions in the information. Where not part of the DCDB, internal lot boundaries have been derived based on visible occupation of land from 2011, 2012 and 2013 orthorectified aerial imagery and CAD Detail Survey. They should not be considered spatially accurate (Derived Lot Boundary)

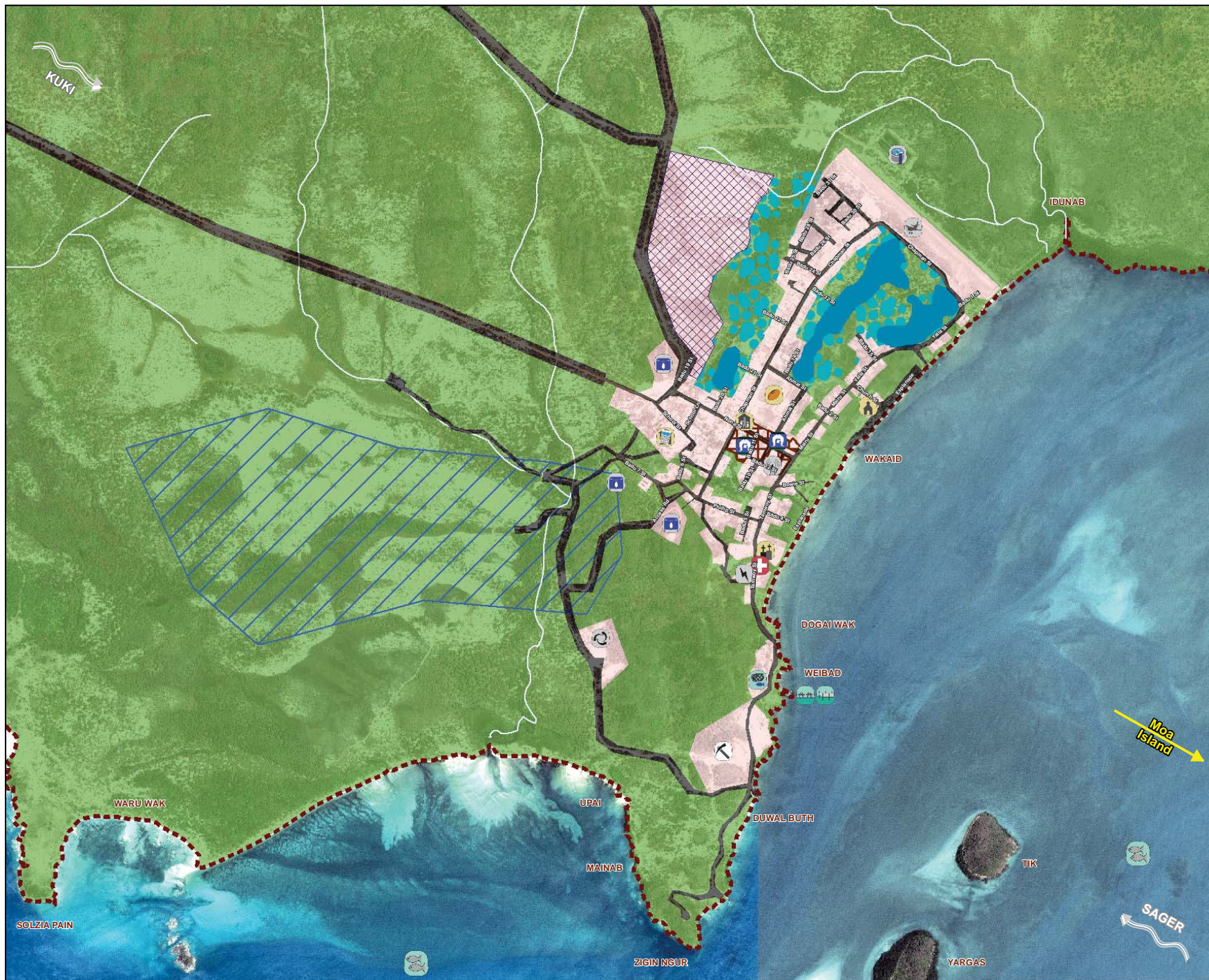
Projection: GDA 1994 MGA Zone 54 Datum: GDA 1994

Approx. Scale @A3 1:60,000



Strategic Framework Map – Badu Island





Zenadth Kes  
Planning Scheme:  
Planning Scheme for  
The Torres Strait Island  
Regional Council Area

## LEGEND

### EXISTING FACILITIES AND INFRASTRUCTURE

- |                            |                                   |
|----------------------------|-----------------------------------|
| Airstrip                   | Quarry                            |
| Barge Ramp                 | School                            |
| Camps / Outstations        | Sewer Infrastructure              |
| Cemetery                   | Sports Field                      |
| Child Care Facility        | TSIRC Building                    |
| Church                     | Telecommunications Infrastructure |
| Electricity Infrastructure | Waste Facility                    |
| Health Centre              | Water Supply Infrastructure       |
| Pier                       |                                   |

### BOUNDARIES AND FEATURES

- Waterways
- Direction to the nearest Islands
- Road
- LGA
- Kuki (NW Winds - January to April)
- Sager (SE Winds - May to December)

### PATTERN OF LAND USE

- Township
- Environmental Management and Conservation

### NATURAL ENVIRONMENT

- Fishing Area
- Wetlands (close to township area)
- Water Catchment Area
- Low Lying Land

### FUTURE FACILITIES, INFRASTRUCTURE AND ACTIVITIES

- Aquaculture
- Township Expansion
- Township Centre Core

**Data Sources:**  
Unless stated below all landuse, road, or natural feature data shown is from the Strategic Landuse Plan (SLUP) by the RPS Group 2010.  
**Community Consultation 2013:** Local Names, Places and Identified facilities  
**Department of Natural Resources and Environment:** Imagery  
**LGA Boundaries:** Terrain Data and Flooding layers  
**AECOM:** all strategic framework, zoning and local area plan data is modified from the SLUP and DERM source data.  
**James Cook University:** Coastal Hazard and Coastal Inundation where shown.  
**Location Map Data:**  
**Sources:** Esri, HERE, DeLorme, USGS, Intermap, increment P Corp., NRCAN, Esri Japan, METI, Esri China (Hong Kong), Esri (Thailand), Mapbox, © OpenStreetMap contributors, and the GIS User Community  
**Main Map Imagery:**  
Badu Village 60 cm Satellite Imagery © Quickbird, 2006

**Disclaimer:**  
AECOM does not warrant the accuracy or completeness of information displayed in this map and any person using it does so at their own risk. AECOM shall bear no responsibility or liability for any errors, faults, defects, or omissions in the information. Where not part of the SLUP, internal boundaries have been derived based on visible occupation of land from 2011, 2012 and 2013 orthorectified aerial imagery and CAD Detail Survey. They should not be considered highly accurate (United Ltd Boundary).

Approx. Scale @A3 1:18,000

Projection: GDA 1994 MGA Zone 54 Datum: GDA 1994

0 100 200 400 Metres



Strategic Framework Map – Badu Township



Updated: 12/08/2015






Updated: 12/08/2015

## BOUNDARIES AND FEATURES

-  Waterways
-  Direction to the nearest islands
-  Cadastral Boundaries
-  Roads
-  LGA
-  Kuki (NW Winds - January to April)
-  Sager (SE Winds - May to December)

■ Township Zone

-  Environmental Management and Conservation Zone

## PRECINCTS

- 
- Township Expansion Precinct

**Data Sources:**

Data Sources:  
Unless stated below all landuse, road, or natural feature data shown is from the Strategic Landuse Plan (SLUP) by the RPS Group 2010.  
Community Consultation 2013: Local Names, Places and identified facilities  
Queensland Dept. Natural Resources and Environment: Imagery, LGA Boundaries, Terrain data and Flooding layers

James Cook University: Coastal Hazard and Coastal Inundation where shown.

shown.

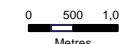
Location Map Base Data:  
World Street Map @ ESRI Online. Sources: Esri, HERE, DeLorme  
USGS, Intermap, increment P Corp., NRCAN, Esri Japan, METI, Esri China  
(Hong Kong), Esri (Thailand), TomTom, MapmyIndia, © OpenStreetMap  
contributors, and the GIS User Community

**Main Map Base Imagery:**  
BING Service (c) Harris Corp, Earthstar Geographics, LLC Earthstar Geographics SIO @ Microsoft Corporation 2014

Disclaimer:  
AECOM does not warrant the accuracy or completeness of information displayed in this map and any person using it does so at their own risk. AECOM shall bear no responsibility or liability for any errors, faults, defects, or omissions in the information. Where not part of the DCDB, Internal lot boundaries have been derived based on visible occupation of land from 2011, 2012 and 2013 orthorectified aerial imagery and CAD Detail Survey. They should not be considered spatially accurate (Derived Lot Boundary)

Projection:GDA 1994 MGA Zone 54 Datum:GDA 1994

Approx. Scale @A3 1:60,000



Zone Map – Badu Island





## LEGEND

### BOUNDARIES AND FEATURES

- Waterways
- Direction to the nearest Islands
- Cadastral Boundaries
- Road
- LGA
- Kuki (NW Winds - January to April)
- Sager (SE Winds - May to December)

### ZONES

- Township Zone
- Environmental Management and Conservation Zone

### PRECINCTS

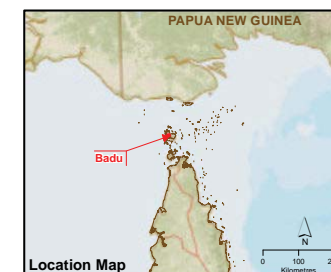
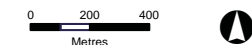
- Township Expansion Precinct

**Data Sources:**  
Unless stated below all landuse, road, or natural feature data shown is from the Strategic Landuse Plan (SLUP) by the RPS Group 2010.  
**Community Consultation 2013:** Local Names, Places and Identified facilities  
**Queensland Dept. Natural Resources and Environment:** Imagery, LGA Boundaries, Terrain data and Flooding layers  
**AECOM:** all strategic framework, zoning and local area plan data is modified from the SLUP and DNRM source data.  
**James Cook University:** Coastal Hazard and Coastal Inundation where shown.  
**Location Map Base Data:**

**Main Map Imagery:**  
Badu Village 60 cm Satellite Imagery @ Quickbird, 2006  
**Disclaimer:**  
AECOM does not warrant the accuracy or completeness of information displayed in this map and any person using it does so at their own risk. AECOM shall bear no responsibility or liability for any errors, faults, defects, or omissions in the information. Where not part of the DCB, internal lot boundaries have been derived based on visible occupation of land from 2011, 2012 and 2013 orthorectified aerial imagery and CAO Detail Survey. They should not be considered spatially accurate (Derived Lot Boundary)

Projection:GDA 1994 MGA Zone 54 Datum:GDA 1994

Approx. Scale @A3 1:18,000



Zone Map – Badu Township





#### LEGEND

##### BOUNDARIES AND FEATURES

- Direction to the nearest Islands
- Cadastral Boundaries
- Road
- LGA
- Kuki (NW Winds - January to April)
- Sager (SE Winds - May to December)

##### GOGOBITHIAY - LAND, SEA AND SKY

- High Value Waterways
- Low Value Waterways
- High Environmental Value
- Moderate Environmental Value
- Low Environmental Value

#### Data Sources:

Unless stated below all landuse, road, or natural feature data shown is from the Strategic Landuse Plan (SLUP) by the RPS Group 2010.  
**Community Consultation 2013:** Local Names, Places and identified facilities  
**Queensland Dept. Natural Resources and Environment:** Imagery.  
**LGA Boundaries, Terrain data and Flooding layers**  
**AECOM:** all strategic framework, zoning and local area plan data is modified from the SLUP and DNRM source data.  
**James Cook University:** Coastal Hazard and Coastal Inundation where shown.  
**Erosion Prone Areas:** @ State of Queensland (Department of Environment and Heritage Protection), 2014  
**Bushfire Prone Area:** @ Public Safety Business Agency (PSBA), QLD Government, 2014  
**Location Map Base Data:**  
**World Street Map** @ ESRI Online. Sources: Sources: Esri, HERE, DeLorme, USGS, Intermap, increment P Corp., NRCAN, Esri Japan, METI, Esri China (Hong Kong), Esri (Thailand), TomTom, MapmyIndia, @ OpenStreetMap contributors, and the GIS User Community  
**Main Map Base Imagery:**  
**BING Service** (c) Harris Corp, Earthstar Geographics, LLC Earthstar Geographics SIO @ Microsoft Corporation 2014

#### Disclaimer:

AECOM does not warrant the accuracy or completeness of information displayed in this map and any person using it does so at their own risk. AECOM shall bear no responsibility or liability for any errors, faults, defects, or omissions in the information. Where not part of the DDB, internal lot boundaries have been derived based on visible occupation of land from 2011, 2012 and 2013 orthorectified aerial imagery and CAD Detail Survey. They should not be considered spatially accurate (Derived Lot Boundary).

Projection: GDA 1994 MGA Zone 54 Datum: GDA 1994

Approx. Scale @A3 1:60,000

0 250 500 1,000  
Metres

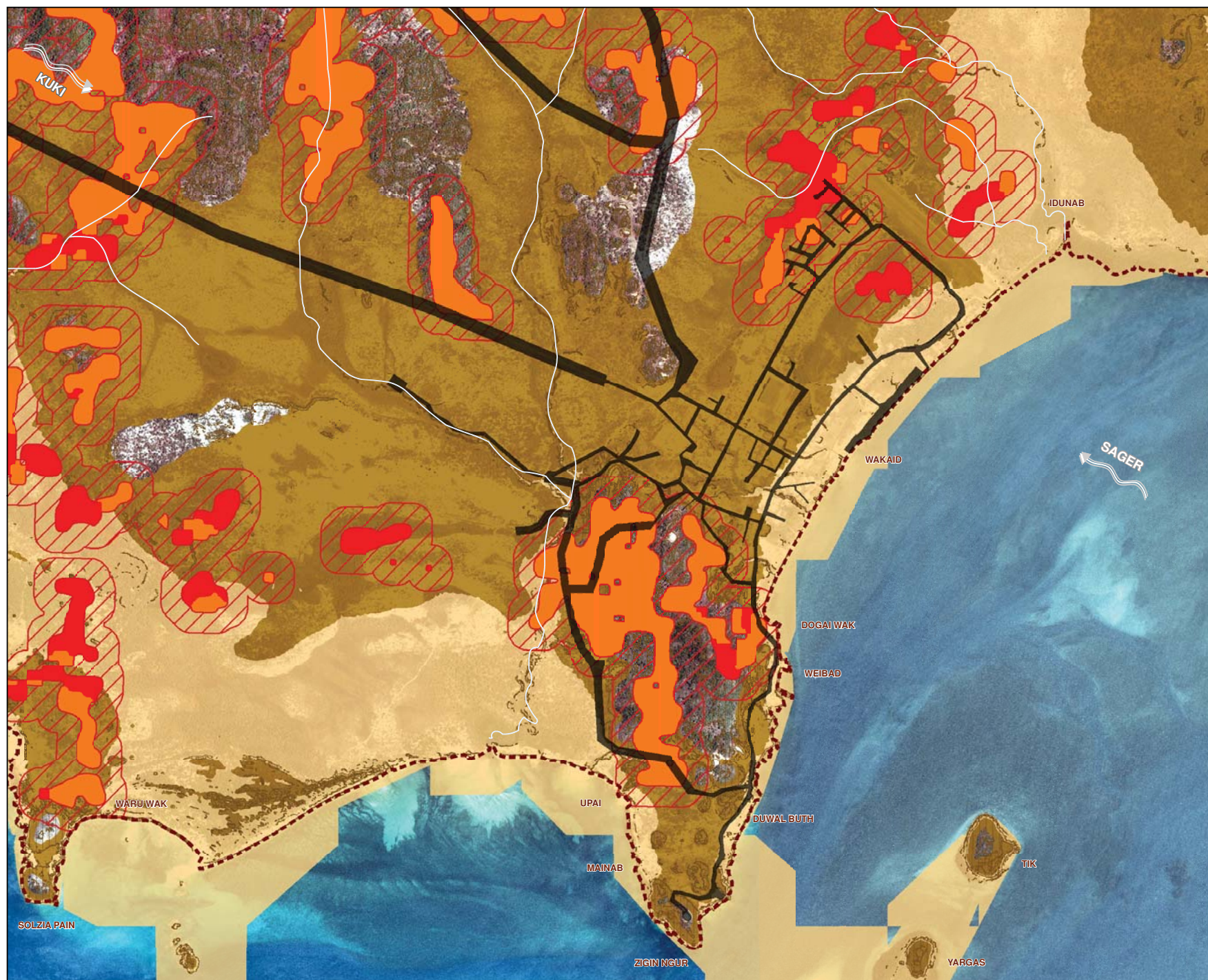


Local Area Plan Map: Gogobithaiy  
(land, sea and sky) - Badu Island









## LEGEND

### BOUNDARIES AND FEATURES

- Waterways
- Direction to the nearest Islands
- Road
- Local Government Area
- Kuki (NW Winds - January to April)
- Sager (SE Winds - May to December)

### NATURAL HAZARDS

- Landslide Hazard
- Potential Acid Sulfate Soils
  - Land Below 5m AHD
  - Land Above 5m and Below 20m AHD
- Bushfire Prone Areas
  - High Hazard
  - Medium Hazard
  - Potential Bushfire Impact Buffer

### Data Sources:

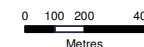
Unless stated below all landuse, road, or natural feature data shown is from the Strategic Landuse Plan (SLUP) by the RPS Group 2010.  
Community Consultation 2013, Local Names, Places and identified facilities  
Queensland Dept. Natural Resources and Environment; Imagery, LGA Boundaries, Terrain data and Flooding layers  
AECOM; all strategic framework, zoning and local area plan data is modified from the SLUP and DNRM source data.  
James Cook University; Coastal Hazard and Coastal Inundation where shown.  
Bushfire Prone Area: @ Public Safety Business Agency (PSBA), QLD Government, 2014  
Location Map Base Data:  
World Street Map @ ESRI Online. Sources: Sources: Esri, HERE, DeLorme, USGS, Intermap, increment P Corp., NRCAN, Esri Japan, METI, Esri China (Hong Kong), Esri (Thailand), TomTom, MapmyIndia, @ OpenStreetMap contributors, and the GIS User Community  
Main Map Imagery:  
Badu Village 60 cm Satellite Imagery @ Quickbird, 2006

### Disclaimer:

AECOM does not warrant the accuracy or completeness of information displayed in this map and any person using it does so at their own risk. AECOM shall bear no responsibility or liability for any errors, faults, defects, or omissions in the information. Where not part of the DCDB, internal lot boundaries have been derived based on visible occupation of land from 2011, 2012 and 2013 orthorectified aerial imagery and CAD Detail Survey. They should not be considered spatially accurate (Derived Lot Boundary)

Projection: GDA 1994 MGA Zone 54 Datum: GDA 1994

Approx. Scale @A3 1:18,000



Local Area Plan Map - Natural Hazards  
Landslide, Acid Sulfate Soils, Bushfire  
Badu Township





## LEGEND

### BOUNDARIES AND FEATURES

- Waterways
- Direction to the nearest Islands
- Cadastral Boundary
- Road
- Local Government Area
- Kuki (NW Winds - January to April)
- Sager (SE Winds - May to December)

### NATURAL HAZARDS

- Flood Hazard
- Coastal Hazard Areas
- Storm Tide Inundation Area
- Erosion Prone Area

**Note:**  
The storm tide inundation areas include the land area likely to be covered by a 0.8 m sea level rise and a 100 year storm tide return period.

**Data Sources:**  
Unless stated below all landuse, road, or natural feature data shown is from the Strategic Landuse Plan (SLUP) by the RPS Group 2010.  
**Community Consultation 2013:** Local Names, Places and identified facilities  
**Queensland Dept. Natural Resources and Environment:** Imagery, LGA Boundaries, Terrain data and Flooding layers  
**AECOM:** all strategic framework, zoning and local area plan data is modified from the SLUP and DNRM source data.  
**James Cook University:** Coastal Hazard and Coastal Inundation where shown.  
**Erosion Prone Area (v5):** © State of Queensland (Department of Environment and Heritage Protection), 08/07/2015  
**Interim Floodplain Assessment**  
IfAO © Torres Strait Island Regional Council, January 2014. This data has not been ground verified  
**Location Map Base Data:**  
World Street Map © ESRI Online. Sources: Sources: Esri, HERE, DeLorme, USGS, Intermap, increment P Corp., NRCAN, Esri Japan, METI, Esri China (Hong Kong), Esri (Thailand), TomTom, MapmyIndia, © OpenStreetMap contributors, and the GIS User Community  
**Main Map Base Imagery:**  
BING Service (c) Harris Corp, Earthstar Geographics, LLC Earthstar Geographics SIO © Microsoft Corporation 2014  
**Disclaimer:**  
AECOM does not warrant the accuracy or completeness of information displayed in this map and any person using it does so at their own risk. AECOM shall bear no responsibility or liability for any errors, faults, defects, or omissions in the information. Where not part of the DCDE, internal lot boundaries have been derived based on visible occupation of land from 2011, 2012 and 2013 orthorectified aerial imagery and CAD Detail Survey. They should not be considered spatially accurate (Derived Lot Boundary)

Projection: GDA 1994 MGA Zone 54 Datum: GDA 1994

Approx. Scale @A3 1:60,000

0 500 1,000  
Metres



Local Area Plan Map: Natural Hazards  
Coastal Hazard Areas and Flood  
Badu Island





## LEGEND

### BOUNDARIES AND FEATURES

- Waterways
- Direction to the nearest Islands
- Cadastral Boundary
- Road
- Local Government Area
- Kuki (NW Winds - January to April)
- Sager (SE Winds - May to December)

### NATURAL HAZARDS

- Flood Hazard
- Coastal Hazard Areas
- Storm Tide Inundation Area
- Erosion Prone Area

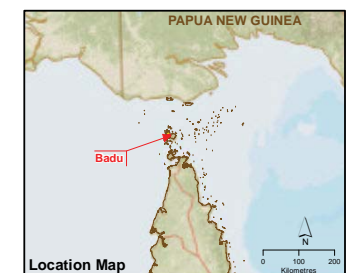
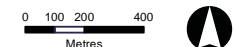
**Note:**  
The storm tide inundation areas include the land area likely to be covered by a 0.8 m sea level rise and a 100 year storm tide return period.

**Data Sources:**  
Unless stated below all landuse, road, or natural feature data shown is from the Strategic Landuse Plan (SLUP) by the RPS Group 2010.  
**Community Consultation 2013:** Local Names, Places and identified facilities  
**Queensland Dept. Natural Resources and Environment:** Imagery, LGA Boundaries, Terrain data and Flooding layers  
**AECOM:** all strategic framework, zoning and local area plan data is modified from the SLUP and DNRM source data.  
**James Cook University:** Coastal Hazard and Coastal Inundation where shown.  
**Erosion Prone Area (v5):** © State of Queensland (Department of Environment and Heritage Protection), 08/07/2015  
**Interim Floodplain Assessment**  
**IFAO** © Torres Strait Island Regional Council, January 2014. This data has not been ground verified  
**Location Map Base Data:**  
**World Street Map** © ESRI Online. Sources: Esri, HERE, DeLorme, USGS, Intermap, increment P Corp., NRCAN, Esri Japan, METI, Esri China (Hong Kong), Esri (Thailand), TomTom, MapmyIndia, © OpenStreetMap contributors, and the GIS User Community  
**Main Map Imagery:**  
Badu Village 60 cm Satellite Imagery © Quickbird, 2006

**Disclaimer:**  
AECOM does not warrant the accuracy or completeness of information displayed in this map and any person using it does so at their own risk. AECOM shall bear no responsibility or liability for any errors, faults, defects, or omissions in the information. Where not part of the DCDB, internal lot boundaries have been derived based on visible occupation of land from 2011, 2012 and 2013 orthorectified aerial imagery and CAD Detail Survey. They should not be considered spatially accurate (Derived Lot Boundary).

Projection: GDA 1994 MGA Zone 54 Datum: GDA 1994

Approx. Scale @A3 1:18,000



Local Area Plan Map: Natural Hazards  
Coastal Hazard Areas and Flood  
Badu Township