

SC2.5 Erub (Darnley) Island maps



LEGEND

EXISTING FACILITIES AND INFRASTRUCTURE

- Airstrip
- Barge Ramp
- Cemetery
- Church
- Electricity Infrastructure
- Garden
- Health Centre
- IBIS Store
- Sacred Site
- School
- Sports Field / Stadium
- Sewer
- Infrastructure
- Telecommunications Infrastructure
- TSIRC Buildings
- Waste Facility
- Water Supply Infrastructure

BOUNDARIES AND FEATURES

- Direction to the nearest Islands
- Waterways
- Road
- LGA
- Kuki (NW Winds - January to April)
- Sager (SE Winds - May to December)

PATTERN OF LAND USE

- Township

NATURAL ENVIRONMENT

- Environmental Management and Conservation
- Fish Area
- Fish Trap
- Water Catchment Area

FUTURE FACILITIES, INFRASTRUCTURE AND ACTIVITIES

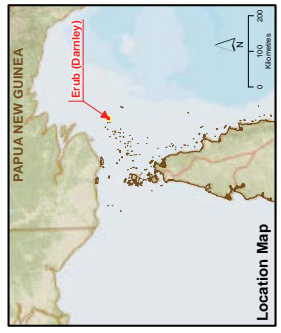
- Township Expansion

DATA SOURCES
Unless stated below all landuse, road, or natural feature data shown is from the Strategic Landuse Plan (SLUP) by the RPS Group 2010. Community Infrastructure: Local Networks, Pipes and Identified Facilities (Local Networks, Pipes and Identified Facilities; SLUP; Imagery). LGA Boundaries, Terrain data and Flooding Layers AECOM; all strategic framework, zoning and local area plan data is modified from the SLUP and DNRM source data. Location Maps: Base Data and LGA Boundaries Imagery: Sources: Esri, HERE, DeLorme, USGS, Intermap, increment P Corp., NRCAN, Esri, Japan, METI, Esri China (Hong Kong), Esri (Thailand), TomTom, Mapbox, © OpenStreetMap contributors, and the GIS User Community

Disclaimer
All conditions in terms of the accuracy or completeness of information displayed in this map are disclaimed. AECOM and its consultants accept no liability for any errors, facts, omissions, or omissions in the information. Where part of the data has been derived from third parties, AECOM and its consultants accept no liability for any errors, facts, omissions, or omissions in the information. Where part of the data has been derived from third parties, AECOM and its consultants accept no liability for any errors, facts, omissions, or omissions in the information. This should not be considered spatially accurate. (Derived from boundary)

Projection: GDA 1994 MGA Zone 51 Datum: GDA 1994

0 50 100 200 Metres
Approx. Scale @A3 1:13,000



Strategic Framework Map
Erub (Darney) Island





**Zenarth Kes
Planning Scheme for
The Torres Strait Island
Regional Council Area**

LEGEND

BOUNDARIES AND FEATURES

- Direction to the nearest islands
- Road
- Cadastral Boundaries
- LGA
- Kuki (NW Winds - January to April)
- Sager (SE Winds - May to December)

GOGOBITHIAY - LAND, SEA and SKY

- Low Value Waterways
- High Environmental Value
- Moderate Environmental Value
- Low Environmental Value



Data Sources: All the data, road, or other features etc. shown is from the Strategic Landscape Plan (SLP) by the RPS Group 2010. Community Consultation 2013; Local Names, Places and Identified Facilities Queensland Dept. Natural Resources and Environment; Imagery, Queensland Boundaries, Terrain data and Flooding layers. AECOM/URS is the design team, zoning and local area plan data is modified from the SLP by URS. The map is based on the data from James Cook University - Coastal Hazards and Coastal Inundation where shown.

Erosion Threats Atlas: (c) State of Queensland (Department of Environment and Heritage Protection), 2014

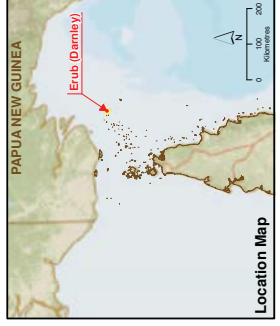
Map Data: The map is based on the imagery: World Street Map and World Imagery @ ESRI Online. Sources: Sources: Esri, HERE, DeLorme, USGS, Intermap, increment P Corp., NRCAN, Esri, Japan, METI, Esri (China (Hong Kong)), Esri (Thailand), TomTom, Mapbox, Esri, Swire, OpenStreetMap contributors, and the GIS User Community

Disclaimer: We warrant the accuracy or completeness of information displayed on this map and any person using it does so at their own risk. AECOM/URS bears no responsibility or liability for any errors, facts, omissions, or omissions in the information. Where no part of the DCIR, internal lot boundaries have been derived based on visible occupation of land from 2011, 2012 and 2013 orthorectified aerial imagery and CAD Data Survey. They should not be considered spatially accurate (derived lot boundary).

Projection: GDA 1994 MGA Zone 54 Datum: GDA 1994

Approx. Scale @ A3 1:13,000

0 50 100 200 Metres



Local Area Plan Map: Gogobithiy (land, sea and sky) – Erub Island



Zenarth Kes
Planning Scheme for
The Torres Strait Island
Regional Council Area

LEGEND

BOUNDARIES AND FEATURES

- Direction to the nearest islands
- Waterways
- Road
- Cadastral Boundaries
- LGA
- Kuki (NW Winds - January to April)
- Sager (SE Winds - May to December)

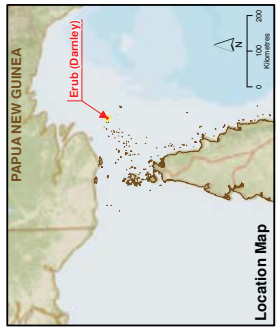
NATURAL HAZARDS

- Landslide Hazard
- Potential Acid Sulfate Soils
- Land Below 5m AHD
- Land Above 5m and Below 20m AHD



Data Sources:
 All the data used, used, or edited features etc, shown is from the Strategic Land Use Plan (SLUP) by the RPS Group 2010.
 Community Consultation 2013; Local Names, Places and Identified Facilities
 Queensland Dept. Natural Resources and Environment; Imagery,
 LGA Boundaries, Topographic and Flooding layers
 AECOM; Imagery network, zoning and local area plan data is modified
 from the SLUP.
 James Cook University; Coastal Hazards and Coastal Inundation where shown.
 Erosion Process Atlas; (c) State of Queensland (Department of Environment and Heritage Protection), 2014
 World Street Map and World Imagery @ ESRI Online. Sources: Sources: Esri, HERE, DeLorme, USGS, Intermap, increment P Corp., NRCAN, Esri, Japan, METI, Esri China (Hong Kong), Esri (Thailand), TomTom, Mapbox, © OpenStreetMap contributors, and the GIS User Community
 Disclaimer: We warrant the accuracy or completeness of information displayed on this map and any person using it does so at their own risk. ACONMBAI bear no responsibility or liability for any errors, facts, omissions, or omissions in the information. Where not part of the DCIR, internal lot boundaries have been derived based on visible occupation of land from 2011/2012 and 2013 unrectified aerial imagery and CAD Data Survey. They should not be considered spatially accurate (beyond 1:50,000).
 Projection: GDA 1994 MGA Zone 54 Datum: GDA 1994
 Approx. Scale @ A3 1:10,000
 0 50 100 200
 Metres

Projection: GDA 1994 MGA Zone 54 Datum: GDA 1994
 Approx. Scale @ A3 1:10,000
 0 50 100 200
 Metres



Location Map
 Local Area Plan Map - Natural Hazards
 Landslide, Acid Sulfate Soils, Bushfire
 Erub Township

LEGEND

BOUNDARIES AND FEATURES

- ➔ Direction to the nearest islands
- ▬ Road
- ▬ Cadastral Boundaries
- ▬ LGA
- ➔ Kuki (NW Winds - January to April)
- ➔ Sager (SE Winds - May to December)

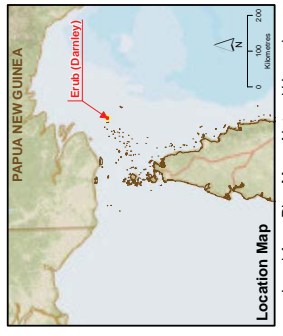
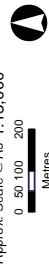
NATURAL HAZARDS

- ▬ Flood Hazard
- ▬ Coastal Hazard Areas
- ▬ Storm Tide Inundation Area
- ▬ Erosion Prone Area

Note:

The storm tide inundation areas include the land area likely to be covered by a 0.8 m sea level rise and a 100 year storm tide return period.

Data Sources: All features, roads, or related feature data shown is from the Strategic Land Use Plan (SLUP) by the RPS Group 2010, Community Consultation 2013, Local Names, Places and Identified Facilities Queensland Dept. Natural Resources and Environment; Imagery, LGA Boundaries, Terrain data and Flooding layers
AECOM: all engineering, zoning and local area plan data is modified from the Queensland Department of Natural Resources and Environment, James Cook University, Coastal Hazards and Coastal Inundation where shown.
ESRI: Esri, Inc. © State of Queensland (Department of Environment and Heritage Protection), 06/07/2015
ESRI: Esri, Inc. © State of Queensland (Department of Environment and Heritage Protection), 06/07/2015
IPAO: Torres Strait Island Regional Council, January 2014. This data has not been ground verified.
Location: Map Base, Data and LGA map base imagery: Work Street Maps and World Imagery © ESRI Online. Sources: Esri, HERE, DeLorme, USGS, Intermap, increment P Corp., NRCAN, Esri, Swatch, GEBCO, Mapbox, OpenStreetMap contributors, and the GIS User Community
Disclaimer: AECOM does not warrant the accuracy or completeness of information displayed in this map and any accompanying documents. AECOM shall bear no responsibility or liability for any errors or omissions in the data or information. The data and information shown on this map are provided for informational purposes only. The data and information shown on this map are not intended to be used for legal or other purposes. The data and information shown on this map are provided for informational purposes only. They should not be considered spatially accurate (derived Lat. Boundary).
Projection: GDA 1994 MGA Zone 54 Datum: GDA 1994
Approx. Scale @ A3: 1:13,000
0 50 100 200 Metres



LEGEND

BOUNDARIES AND FEATURES

- Direction to the nearest islands
- Waterways
- Road
- Cadastral Boundaries
- LGA
- Kuki (NW Winds - January to April)
- Sager (SE Winds - May to December)

NATURAL HAZARDS

- Flood Hazard
- Coastal Hazard Areas
- Storm Tide Inundation Area
- Erosion Prone Area

Note:
The storm tide inundation areas include the land area likely to be covered by a 0.8 m sea level rise and a 100 year storm tide return period.

Data Sources: All features, roads, or related feature data shown on this map are derived from the Strategic Land Use Plan (SLUP) by the RPS Group 2010, Community Consultation 2013, Local Names, Places and Identified Facilities Queensland Dept. Natural Resources and Environment 1: Imagery, LGA Boundaries, Terrain data and Flooding layers
ACCOM: All imagery, network zoning and local area plan data is modified from the Queensland Government's Queensland Coastal Hazards and Coastal Inundation where shown.
Erosion Prone Areas (EPAs): © State of Queensland (Department of Environment and Heritage Protection), 06/07/2015
Local Area Plan (LAP): © Torres Strait Islands Regional Council, January 2014. This data has not been ground verified.
Location: Map Base, Data and LGA map base imagery: Work Street Map and World Imagery © ESRI Online. Sources: Esri, HERE, DeLorme, USGS, Intermap, increment P Corp., NRCAN, Esri, Swisstopo, Mapbox, OpenStreetMap contributors, and the GIS User Community
Disclaimer: ACCOM does not warrant the accuracy or completeness of information displayed in this map and any person using it does so at their own risk. ACCOM shall bear no responsibility or liability for any loss or damage, including consequential, special, or exemplary damages, that may result from the use of the information contained in this map. The information contained in this map is provided "as is" and "as available" without any warranty of accuracy or completeness. They should not be considered spatially accurate (derived Lat. Boundary).

Projection: GDA 1994 MGA Zone 54 Datum: GDA 1994
Approx. Scale @ A3 1:10,000

