

SC2.7 Kirriri (Hammond) Island maps



Zenadh Kes Planning Scheme for The Torres Strait Island Regional Council Area

- LEGEND**
- EXISTING FACILITIES AND INFRASTRUCTURE**
- Camps / Outstations
 - Electricity
 - TSIRC Buildings
 - Infrastructure
 - Quarry
 - Waste Facility
 - Water Supply Infrastructure
 - Sacred Site

- Area of Interest (Thursday Island aviation facility)
- 13km wildlife hazard buffer area (Horn Island aviation facility)

- BOUNDARIES AND FEATURES**
- Direction to the nearest islands
 - Waterway
 - Roads
 - LGA

- PATTERN OF LAND USE**
- Township
 - Sager (SE Winds - January to April)
 - Kuki (NW Winds - May to December)

- NATURAL ENVIRONMENT**
- Environmental Management and Conservation
 - Dugong
 - Fishing areas

- FUTURE FACILITIES, INFRASTRUCTURE AND ACTIVITIES**
- Sewerage Infrastructure
 - Waste facility (possible location)
 - Township Expansion
 - Township Centre Core
 - Possible Sacred Sites

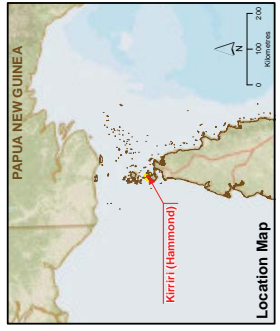
Data Sources: All maps, aerial imagery, road, or natural feature data shown in this Strategic Landuse Plan (SLUP) by the RPS Group 2010. Community Contributions 2013. Local Names, Place and Identified Facilities LGA Boundaries, Terrain data and Flooding Layers. AECOM - all strategic framework, zoning and local area plan data is derived from the AECOM 2010/11 work. The DTWV source data is based on the DTWV source data.

Location Maps: Esri Online, Source:Source: Esri, HERE, DeLorme, Mapbox, OpenStreetMap contributors, Swatch Images, Mapbox, Esri (Thailand), TomTom, MapmyIndia, © OpenStreetMap contributors, and the GIS User Community

Hammond (Hammond) Satellite Imagery © QuickBird, 2006

Disclaimer: The user warrants that the user has obtained all necessary permissions to use the map and any person using it does so at their own risk. AECOM shall bear no responsibility or liability for any errors, fault, omissions or in the information. Where not part of the information provided, users are advised that this information is not a guarantee of land from 2011-2016. Users are advised that this information is not a guarantee of land from 2011-2016. Users are advised that this information is not a guarantee of land from 2011-2016. Users are advised that this information is not a guarantee of land from 2011-2016. Users are advised that this information is not a guarantee of land from 2011-2016.

Projection: GDA 1994 MGA, Zone 54 Datum: GDA 1994
Approx. Scale @ A3 1:10,000



Strategic Framework Map
Kiriri (Hammond) township



Updated: 2/02/2016



LEGEND

BOUNDARIES AND FEATURES

- Direction to the nearest islands
- Waterway
- Cadastral Boundaries
- Road
- LGA
- Kuki (NW Winds - January to April)
- Sager (SE Winds - May to December)

ZONES

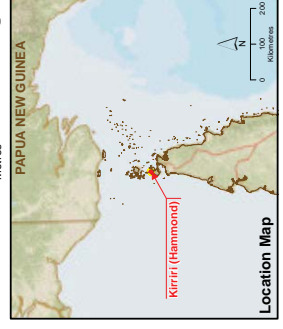
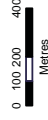
- Township Zone
- Environmental Management and Conservation Zone

PRECINCTS

- Township Expansion Precinct

Data Sources:
 All satellite, aerial, road, or natural feature data shown is from the Strategic Landuse Plan (SLP) by the RPS Group 2010, Community Consultations 2013, Local Names, Places and Identified Facilities (LNA) by the RPS Group 2010, and the Department of Natural Resources and Environment's (DNRE) Topographic, Terrain Data and Flood Data Layers (LGA Boundaries, Terrain Data and Flood Data Layers).
 AECOM: all strategic framework, zoning and local area plan data is derived from the 2014 DNRN source data.
 Location: Map Data: Bing.
 World Street Map: © ESRI Online. Source: Source: Esri, HERE, DeLorme, Mapbox, TomTom, Swatch, © OpenStreetMap contributors, and the GIS User Community
 Bing Street View: © Microsoft Corporation 2014
 Bing Satellite: © Microsoft Corporation 2014
 Bing Imagery: © Microsoft Corporation 2014
 Bing Topographic: © Microsoft Corporation 2014
 Bing Terrain: © Microsoft Corporation 2014
 Bing Elevation: © Microsoft Corporation 2014
 Bing Hydrology: © Microsoft Corporation 2014
 Bing Land Use: © Microsoft Corporation 2014
 Bing Vegetation: © Microsoft Corporation 2014
 Bing Water: © Microsoft Corporation 2014
 Bing Roads: © Microsoft Corporation 2014
 Bing Rail: © Microsoft Corporation 2014
 Bing Airports: © Microsoft Corporation 2014
 Bing Power: © Microsoft Corporation 2014
 Bing Telecommunications: © Microsoft Corporation 2014
 Bing Other: © Microsoft Corporation 2014
 Bing Imagery: © Microsoft Corporation 2014
 Bing Topographic: © Microsoft Corporation 2014
 Bing Terrain: © Microsoft Corporation 2014
 Bing Elevation: © Microsoft Corporation 2014
 Bing Hydrology: © Microsoft Corporation 2014
 Bing Land Use: © Microsoft Corporation 2014
 Bing Vegetation: © Microsoft Corporation 2014
 Bing Water: © Microsoft Corporation 2014
 Bing Roads: © Microsoft Corporation 2014
 Bing Rail: © Microsoft Corporation 2014
 Bing Airports: © Microsoft Corporation 2014
 Bing Power: © Microsoft Corporation 2014
 Bing Telecommunications: © Microsoft Corporation 2014
 Bing Other: © Microsoft Corporation 2014

Projection: GDA 1994, MGA Zones 54 Datum: GDA 1994
 Approx. Scale @ A3 1:22,000



Zone Map
Kiriri (Hammond) Island





LEGEND

BOUNDARIES AND FEATURES

- Direction to the nearest islands
- Waterway
- Cadastral Boundaries
- Road
- LGA
- Kuki (NW Winds - January to April)
- Sager (SE Winds - May to December)

ZONES

- Township Zone
- Environmental Management and Conservation Zone

PRECINCTS

- Township Expansion Precinct

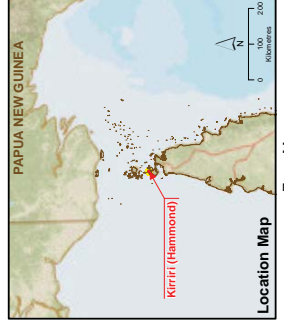
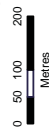


Data Sources:
 Unrevised aerial imagery, road, or natural feature data shown on this map are the property of the Queensland Government. Copyright: 2013. Local Name, Place, and Identified Facilities. Queensland Department of Natural Resources and Environment. Imagery: AECOM. Imagery data is provided to the user in accordance with the terms and conditions of the license. AECOM all services (remote sensing and local area plan data) are provided to the user in accordance with the terms and conditions of the license. Imagery: ESRI Online. Sources: Sources: Esri, HERE, DeLorme, USGS, Intermap, increment P Corp., NRCAN, Esri Japan, METI, Esri China (Hong Kong), Esri (Thailand), TomTom, Mapbox, © OpenStreetMap contributors, © Swatch Communications, © Geo User Community. Imagery: Hammarstrom Satellite Imagery © QuickBird, 2006.

AECOM does not warrant the accuracy or completeness of information displayed in this map and any person using it does so at their own risk. AECOM shall bear no responsibility or liability for any errors or omissions in this map. All boundaries have been derived based on visible occupation of land from 2011, 2012 and 2013 orthorectified aerial imagery and CAD Detail Survey. They should not be considered spatially accurate. (derived from boundary)

Projection: GDA 1994 MGA Zone 54 Datum: GDA 1994

Approx. Scale @ A3 1:10,000



Zone Map
Kiriri (Hammond) township



LEGEND

BOUNDARIES AND FEATURES

- Direction to the nearest Islands
- Waterways
- Cadastral Boundaries
- Roads
- LGA
- Kuki (NW Winds - January to April)
- Sager (SE Winds - May to December)

NATURAL HAZARDS

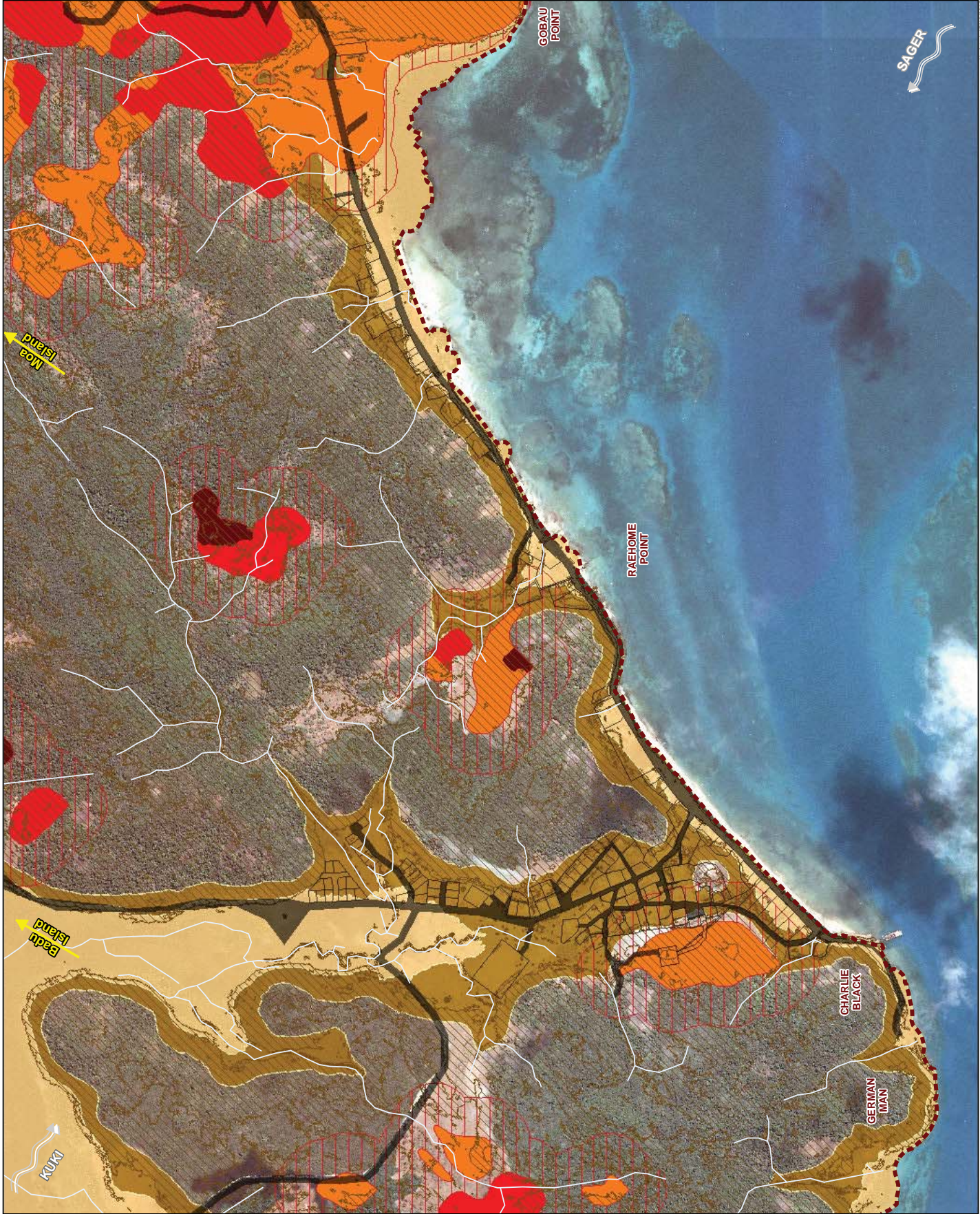
- Landslide Hazard
- Bushfire Prone Areas
- Very High Hazard
- High Hazard
- Medium Hazard
- Potential Bushfire Impact Buffer

Potential Acid Sulphate Soils

- Land Below 5m AHD
- Land Above 5m and below 20m AHD

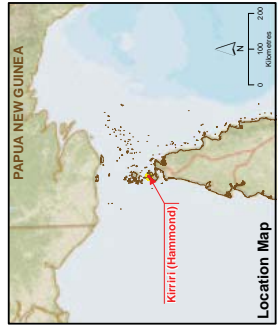
Data SOURCES:
Unless stated below all landuse, road, or natural feature data shown is from the Strategic Landuse Plan (SLUP) by the JPS Group 2010.
Community/Cadastral Data: Local Name, Place and Identified Facilities
LGA Boundaries: Local Government Areas (Map)
LGA Boundaries: Term data and Flood layers
AECOM: all strategic framework, zoning and local area plan data is modified from the SLUP and DMRM source data.
JAMES COOK UNIVERSITY: Coastal Hazard and Coastal Inundation where
BURDELL: Flood Hazard (PSEA), OLD
GOVERNMENT: 2014
LOCATION/MAP DATA:
World Street Map: © ESRI Online. Source: Esri, HERE, DeLorme, Navteq, Intermap, Swire, ANON, Esri Japan, NETELEMEDIA, Esri, Swire, Esri (Source), Esri, Imagery, Imagery, Imagery, Imagery, © OpenStreetMap contributors, and the GIS User Community
Main Map Imagery:
Hammond from Satellite Imagery © QuickBird, 2006

Disclaimer:
AECOM does not warrant the accuracy or completeness of information displayed in this map and any person using it does so at their own risk. AECOM shall bear no responsibility or liability for any errors, faults, omissions, or inaccuracies in the information. Where not part of the data, information or boundaries have been derived based on visible occupation of land from 2011/2012 or 2011/2013 topographical imagery and CAD Total Station. They should not be considered spatially accurate. (Bounded by boundary)



Projection:GDA 1994 MGA Zone 54 Datum:GDA 1994

Approx. Scale @A3 1 cm = 100 m



Location Map

Local Plan Map - Natural Hazards
Landslide, Acid Sulphate Soils, Bushfire
Kiriri (Hammond) township



LEGEND

BOUNDARIES AND FEATURES

- Direction to the nearest islands
- Waterways
- Cadastral Boundaries
- Roads
- LGA

- Kuki (NW Winds - January to April)
- Sager (SE Winds - May to December)

NATURAL HAZARDS

- Flood Hazard

Coastal Hazard Areas

- Storm Tide Inundation Area
- Erosion Prone Area

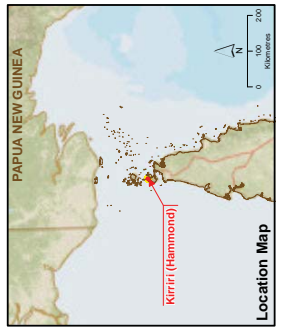
Note:
The storm tide inundation areas include the land area likely to be covered by a 0.8 m sea level rise and a 100 year storm tide return period.

Data Sources:
Topographic, road, and natural feature data shown in this map were derived from the State of Queensland (Department of Environment and Heritage Protection), 08/07/2015.
IPAC @ Torres Strait Island Regional Council, January 2014. This data has not been ground verified.
Location: Main: Base Data:
Vector Street Map @ ESRI Online. Source: Esri, HERE, DeLorme, Mapbox, TCS, Swire, Unacademy, Bing, Microsoft, NextGIS, Mapbox, OpenStreetMap contributors, and the GIS User Community
Main: Main: Base Data:
Main: Base Data:
BING Services © Here Corp, Earthstar Geographics, LLR Earthstar Geographics SIO © Microsoft Corporation 2014
© Geographic Data
AECOM does not warrant the accuracy or completeness of information displayed in this map and any person using it does so at their own risk. AECOM shall bear no responsibility or liability for any errors, faults, defects, or omissions in the information. Where not part of the DCIA, items for boundaries have been derived based on visible occupation of land from aerial photography and field surveys. They should not be considered spatially accurate (to the boundary).

Projection: GDA 1994 MGA Zone 54 Datum: GDA 1994

Approx. Scale @ A3 1:22,000

0 100 200 400
Metres



Local Area Plan Map - Natural Hazards
Coastal Hazard Areas and Flood
Kiriri (Hammond) Island





LEGEND

BOUNDARIES AND FEATURES

- Direction to the nearest islands
- Waterways
- Cadastral Boundaries
- Roads
- LGA
- Kuki (NW Winds - January to April)
- Sager (SE Winds - May to December)

NATURAL HAZARDS

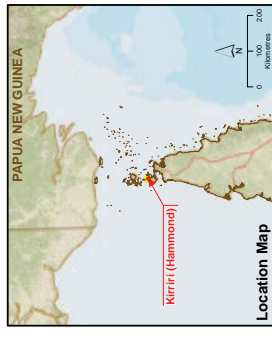
- Flood Hazard
- Storm Tide Inundation Area
- Erosion Prone Area

Note:
The storm tide inundation areas include the land area likely to be covered by a 0.8 m sea level rise and a 100 year storm tide return period.

Data Sources:
The flood hazard, erosion, road, or natural feature data shown in this map are derived from the Strategic Land Use Plan (SLUP) by the PPS Group 2010, Community Consultation 2013, Local Names, Places and Identified Facilities Substandard Data, Natural Resources and Environment Imagery, LGA Boundaries, terrain data and flooding layers.
The cadastral boundaries, flood hazard, erosion, and local area plan data is derived from the SLUP and DMR sources data.
James Cook University, Coastal Hazard and Coastal Inundation where shown.
Erosion prone areas: State of Queensland (Department of Environment and Heritage Protection), 08/07/2015
IPAC © Torres Strait Island Regional Council, January 2014. This data has not been ground verified.
Location: Moa, Basu, Dali
Vector Street Map © ESRI Online, Sources: Esri, HERE, DeLorme, Mapbox, OpenStreetMap (OSM), Swatchday, Mapbox, OpenStreetMap (OSM), Bing, Google, Esri (Thailand), TomTom, Mapbox, © OpenStreetMap contributors, and the GIS User Community
Main: Mike Imbabi
Hammond from Swirelle Imagery © QuickBird, 2006

Disclaimer:
AECOM does not warrant the accuracy or completeness of information displayed in this map and any person using it does so at their own risk. AECOM shall bear no responsibility or liability for any errors, faults, defects, or omissions in the information. Where not part of the DCLB, items for boundaries have been shown based on visible occupation of land from the ground and not on any official title or survey. They should not be considered spatially accurate. (Revised for Standard)

Projection: GDA 1994 MGA Zone 54 Datum: GDA 1994
Approx. Scale @ A3 1 cm = 100 m



Location Map
Local Area Plan Map - Natural Hazards
Coastal Hazard Areas and Flood
Kiriri (Hammond) Township

