

SC2.11 Mer (Murray) Island maps



LEGEND

BOUNDARIES AND FEATURES

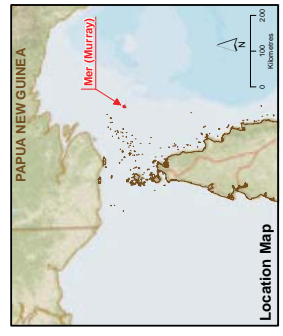
- Direction to the nearest Islands
- Cadastral Boundaries
- Road
- LGA
- Kuki (NW Winds - January to April)
- Sager (SE Winds - May to December)
- GOGOITHIAY - LAND, SEA and SKY**
- High Value Waterway
- Low Value Waterway
- High Environmental Value
- Moderate Environmental Value
- Low Environmental Value
- Potential Rehabilitation Areas

Note:
No data available / processed for Dowar (Daua) and Wyer (Water) Islets

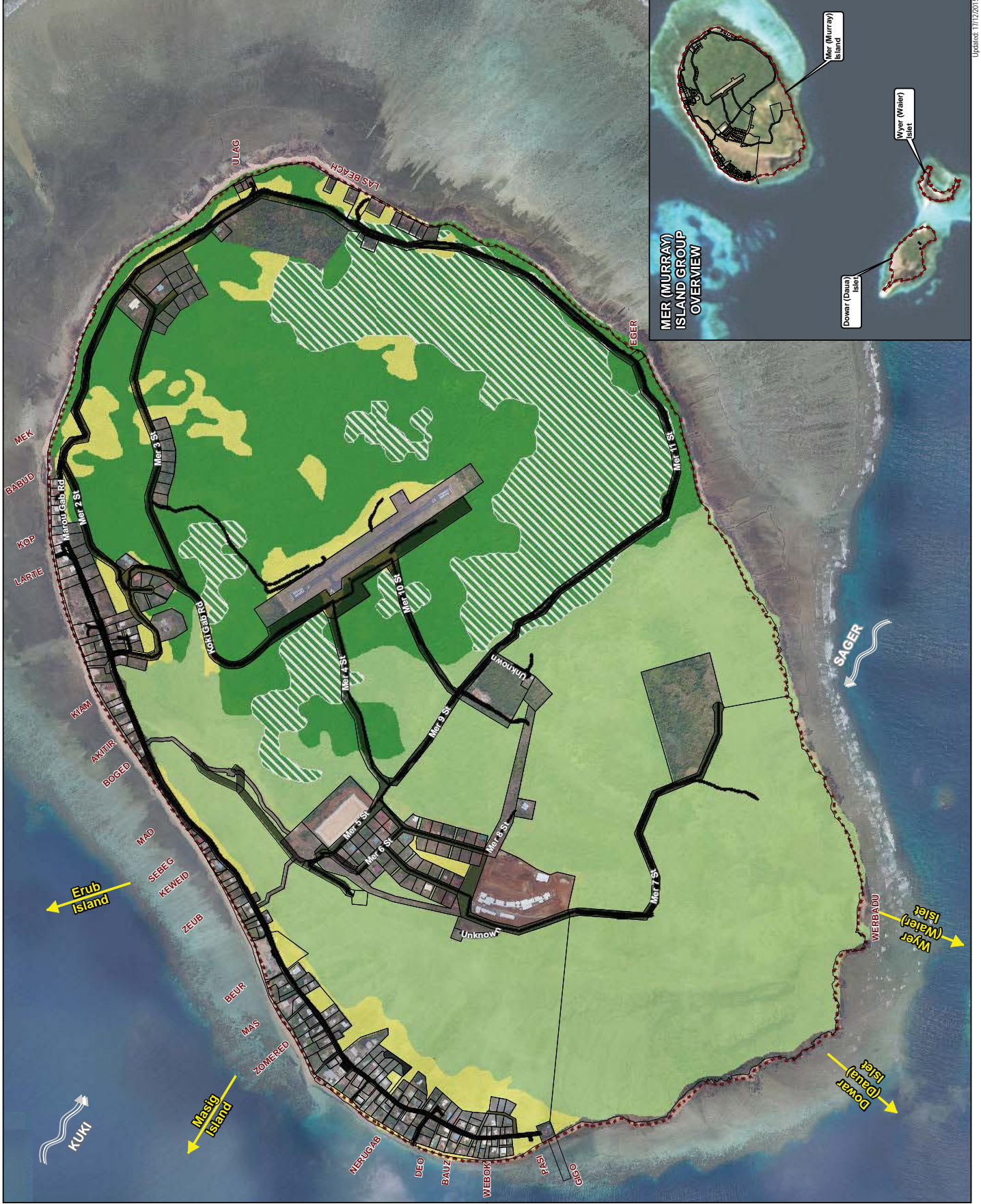
Data Sources:

Unless stated below all landuse, road, or natural feature data shown on this map were derived from the following sources:
 Cadastral Data: 2013. Local Name Place and Street Localities
 Queensland Dept. Natural Resources and Environment: Imagery,
 LGA Boundaries, Terrain data and Floodin layers
 AECOM: all strategic framework, zoning and local area plan data is
 modified from the SUDP and DMRN source data.
 World Street Map @ ESRI Online. Sources: ESRI, HERE, DeLorme,
 USGS, Intermap, increment P Corp., NRCAN, Esri Japan, METI, Esri China
 (Hong Kong), Esri (Thailand), TomTom, MapmyIndia, © OpenStreetMap
 contributors, and the GIS User Community
 Mer (Murray) Island Imagery © 2015
 Mer (Murray) Island Imagery © 2015
 Imagery: ESRI, DigitalGlobe, GeoEye,
 Earthstar Geographics, CNES/Airbus DS, USDA, USGS, AeroX, GeoEye,
 IGN, IPC, swisstopo, and the GIS User Community
 AECOM does not warrant the accuracy or completeness of information displayed in this map
 and any person using it does so at their own risk. AECOM shall bear no responsibility or
 liability for any errors, fault, omissions or inclusions in the information. Where not part of the
 D226, internal or boundaries have been derived based on visible occupation of land from
 2011-2014 or 2011-2013 aerial photography and CAD (total survey). They should not
 be considered legally accurate. (Boundary boundary)

Projection: GDA 1994, MGA, Zone 55, Datum: GDA 1994
 Approx. Scale @ A3 1:10,000



Local Area Plan Map: Gogobithaiy
(land, sea and sky) - Mer (Murray) Island





Zenadh Kes
Planning Scheme
The Torres Strait Island
Regional Council Area

LEGEND

BOUNDARIES AND FEATURES

- Direction to the nearest islands
- Waterways
- Cadastral Boundaries
- Road
- LGA
- Kuki (NW Winds - January to April)
- Sager (SE Winds - May to December)

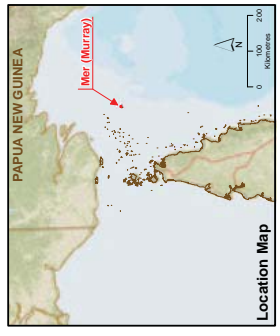
NATURAL HAZARDS

- Landslide Hazard
- Potential Acid Sulphate Soils
- Land Below 5m AHD
- Land Above 5m and Below 20m AHD

Note:
No data available / processed for Dowar (Daua) and Myer (Water) Islets

Data Sources:
Users should be aware that all inshore, coast, or natural feature data shown is from the Strategic Land Use Plan (SLUP) by the RPS Group 2010, Community Consultation 2013. Local Names, Places and Identified Facilities Substrate Data, Natural Hazards and Environment Imagery, Boundaries, terrain data and flooding layers are from the Australian Government's Geospatial Information Infrastructure (GII) and the local area plan data is modified from the SLUP and DMRN source data.
James Cook University, Coastal Hazard and Coastal Inundation where shown.
Ecozone Zoogeographic (c) State of Queensland (Department of Environment and Heritage Affairs) 2014
Location Map Base Data
World Street Map © ESRI Online, Source: Esri, HERE, DeLorme, USGS, Intermap, increment P Corp., NRCAN, Esri Japan, METI, Esri China (Hong Kong), Swire, Esri (Thailand), TomTom, Mapbox, © OpenStreetMap contributors, and the GIS User Community
AECOM does not warrant the accuracy or completeness of information displayed in this map and any person using it does so at their own risk. AECOM shall bear no responsibility or liability for any errors, faults, omissions or in the information. Where not part of the SCIR, items for boundaries have been shown based on visible occupation of land from aerial photography and field survey. They should not be considered spatially accurate (to the best of our knowledge).
Aerial Imagery: Max 1.5m Satellite Imagery © GISP, 2011
World Imagery © ESRI Online, Source: Esri, DigitalGlobe, GeoEye, Earthstar Geographics, CNES/Airbus DS, USDA, USGS, AeroX, GEBCO, IGN, IPC, Swiremap, and the GIS User Community

Projection: GDA 1994 MGA Zone 55 Datum: GDA 1994
Approx. Scale @ A3 1:10,000
0 50 100 200
Metres



Location Map
Local Area Plan Map - Natural Hazards
Landslide, Acid Sulphate Soils, Bushfire
Mer (Murray) Island



Updated: 17/12/2015

