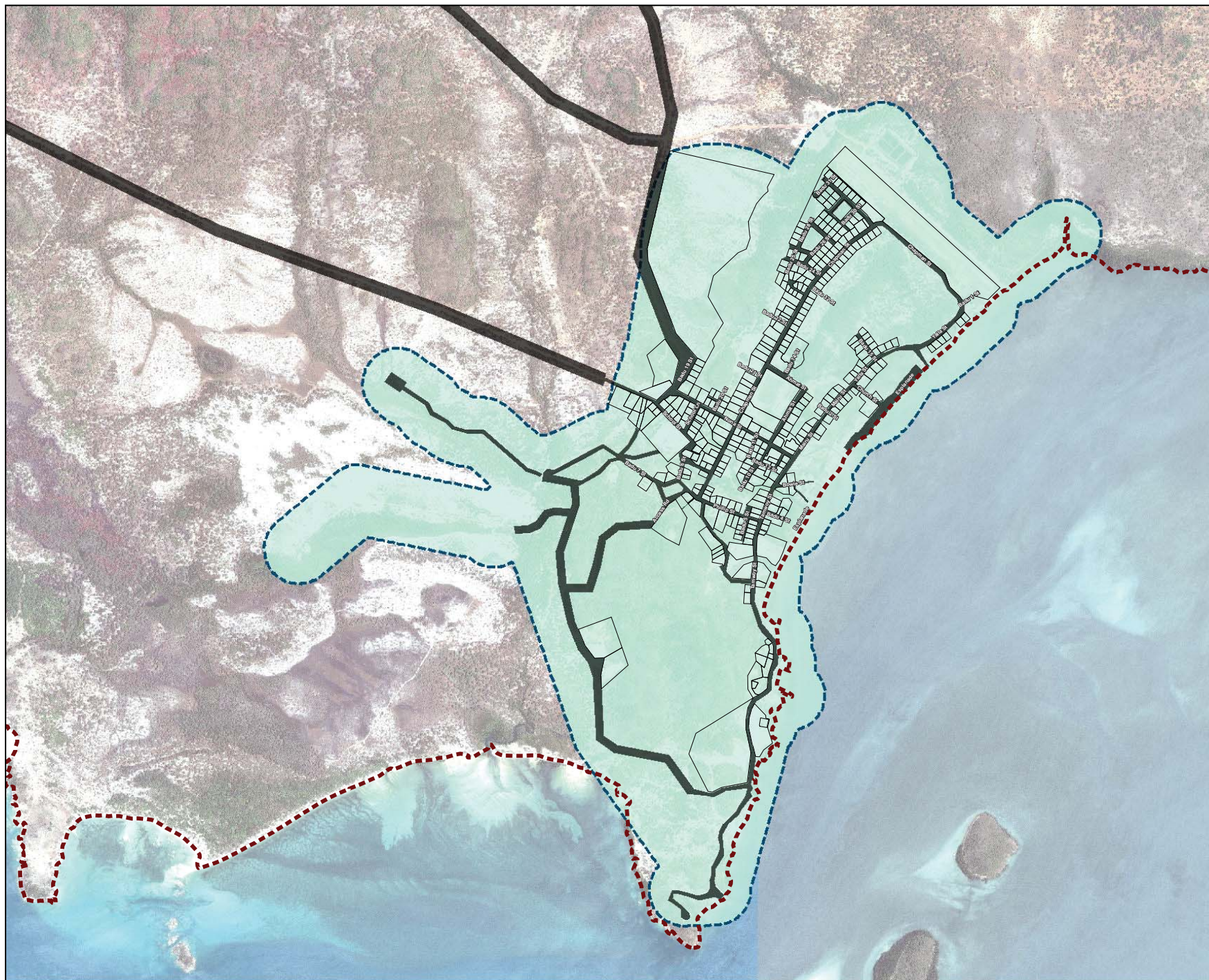


SC3.2 Badu Island maps



LEGEND

Local Government Infrastructure Plan

■ LGIP Area

Boundaries and Features

□ Cadastral Boundaries

■ Road

■ LGA

Data Sources:
Unless stated below all landuse, road, or natural feature data shown is from the Strategic Landuse Plan (SLUP) by the RPS Group 2010.
Community Consultation 2013: Local Names, Places and identified facilities
Queensland Dept. Natural Resources and Environment: Imagery
LGA Boundaries: Terrain data and Flooding layers
AECOM: all strategic framework, zoning and local area plan data is modified from the SLUP and DNRW source data.
James Cook University: Coastal Hazard and Coastal Inundation where shown.

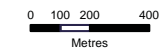
Location Map Base Data:
Sources: Esri, HERE, DeLorme, USGS, Intermap, increment P Corp., NRCAN, Esri Japan, METI, Esri China (Hong Kong), Esri (Thailand), Navteq, © OpenStreetMap contributors, and the GIS User Community
Main Map Imagery:
Badu Village 60 cm Satellite Imagery @ Quickbird, 2006

Disclaimer:
AECOM does not warrant the accuracy or completeness of information displayed in this map and any person using it does so at their own risk. AECOM shall bear no responsibility or liability for any errors, faults, defects, or omissions in the information. Where not part of the DCDB, internal lot boundaries have been derived based on visible occupation of land from 2011, 2012 and 2013 orthorectified aerial imagery and CAD Detail Survey. They should not be considered spatially accurate. (Derived Lot Boundary)



Projection:GDA 1994 MGA Zone 54 Datum:GDA 1994

Approx. Scale @A3 1:18,000



Location Map
Local Government Infrastructure Plan
LGIP Area – Badu Township



LEGEND

Local Government Infrastructure Plan

— Water Infrastructure

Boundaries and Features

▭ Cadastral Boundaries

▬ Road

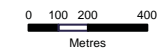
▧ LGA

Data Sources:
Unless stated below all landuse, road, or natural feature data shown is from the Strategic Landuse Plan (SLUP) by the RPS Group 2010.
Community Consultation 2013: Local Names, Places and identified facilities Queensland Dept. Natural Resources and Environment: Imagery.
LGA Boundaries: Terrain data and Flooding layers
AECOM: all strategic framework, zoning and local area plan data is modified from the SLUP and DNRM source data.
James Cook University: Coastal Hazard and Coastal Inundation where shown.
Location Map Base Data:
Sources: Esri, HERE, DeLorme, USGS, Intermap, increment P Corp., NRCAN, Esri Japan, METI, Esri China (Hong Kong), Esri (Thailand), MapmyIndia, © OpenStreetMap contributors, and the GIS User Community
Main Map Imagery:
Badu Village 60 cm Satellite Imagery © Quickbird, 2006
Disclaimer:
AECOM does not warrant the accuracy or completeness of information displayed in this map and any person using it does so at their own risk. AECOM shall bear no responsibility or liability for any errors, faults, defects, or omissions in the information. Where not part of the DCDB, internal lot boundaries have been derived based on visible occupation of land from 2011, 2012 and 2013 orthorectified aerial imagery and CAD Detail Survey. They should not be considered spatially accurate. (Derived Lot Boundary)

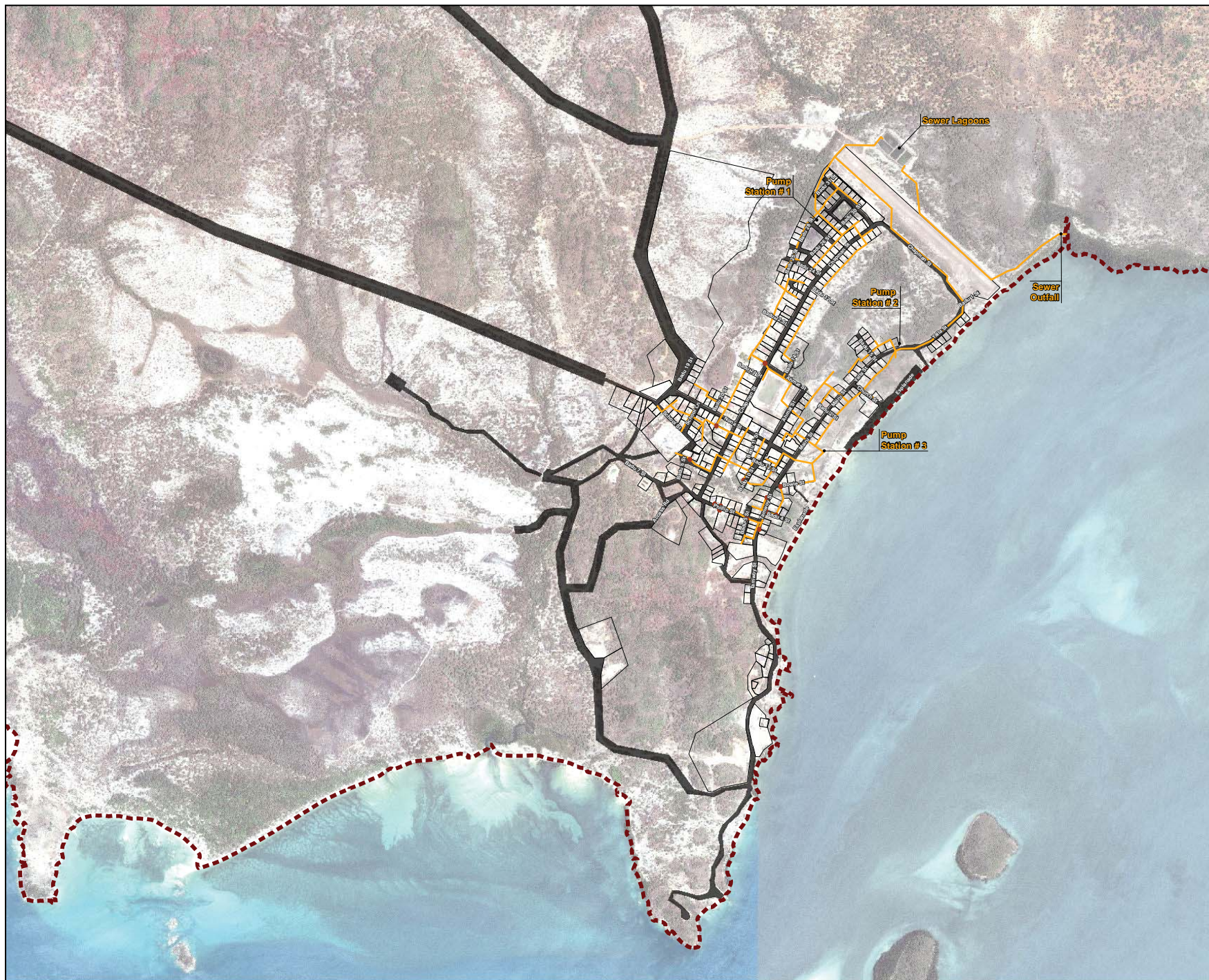


Projection:GDA 1994 MGA Zone 56 Datum:GDA 1994

Approx. Scale @A3 1:18,000



Local Government Infrastructure Plan
Water Infrastructure – Badu Township



LEGEND

Local Government Infrastructure Plan

- Sewer Manhole
- Sewer Infrastructure

Boundaries and Features

- Cadastral Boundaries
- ▬ Road
- ▬ LGA

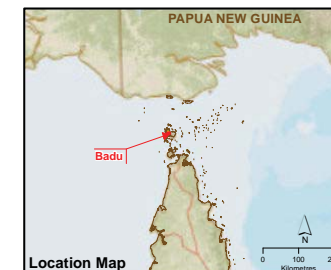
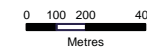
Data Sources:
Unless stated below all landuse, road, or natural feature data shown is from the Strategic Landuse Plan (SLUP) by the RPS Group 2010.
Community Consultation 2013: Local Names, Places and identified facilities Queensland Dept. Natural Resources and Environment: Imagery, LGA Boundaries, Terrain data and Flooding layers
AECOM: all strategic framework, zoning and local area plan data is modified from the SLUP and DNRW source data.
James Cook University: Coastal Hazard and Coastal Inundation where shown.
Location Map Base Data:
Sources: Esri, HERE, DeLorme, USGS, Intermap, increment P Corp., NRCAN, Esri Japan, METI, Esri China (Hong Kong), Esri (Thailand), Navteq, © OpenStreetMap contributors, and the GIS User Community
Main Map Imagery:
Badu Village 60 cm Satellite Imagery © Quickbird, 2006

Disclaimer:
AECOM does not warrant the accuracy or completeness of information displayed in this map and any person using it does so at their own risk. AECOM shall bear no responsibility or liability for any errors, faults, defects, or omissions in the information. Where not part of the DCDB, internal lot boundaries have been derived based on visible occupation of land from 2011, 2012 and 2013 orthorectified aerial imagery and CAD Detail Survey. They should not be considered spatially accurate. (Derived Lot Boundary)

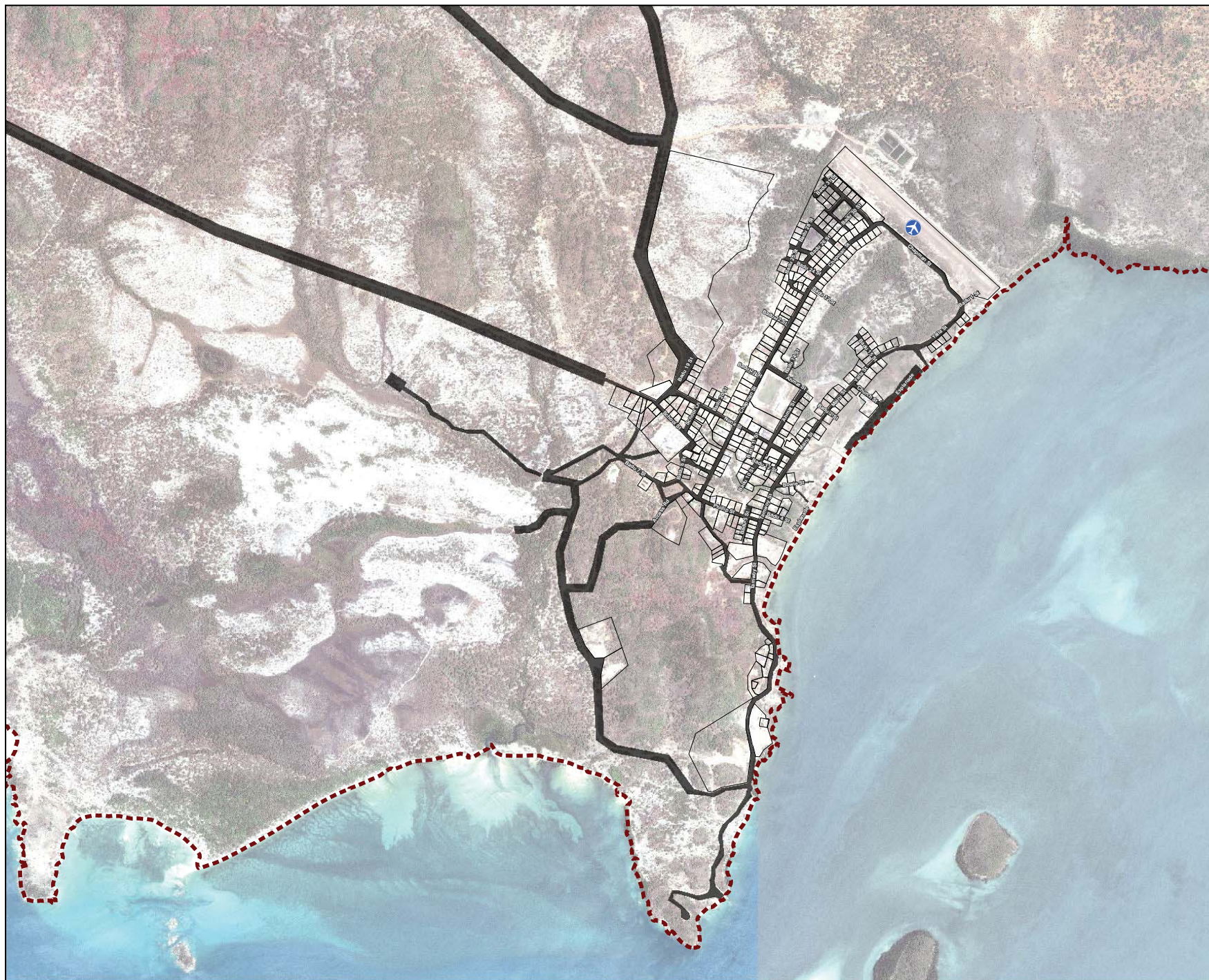


Projection:GDA 1994 MGA Zone 54 Datum:GDA 1994

Approx. Scale @A3 1:18,000


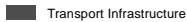




Local Government Infrastructure Plan
Sewer Infrastructure – Badu Township



LEGEND

Local Government Infrastructure Plan

-  Airstrip
-  Transport Infrastructure
- Boundaries and Features**
-  Cadastral Boundaries
-  LGA

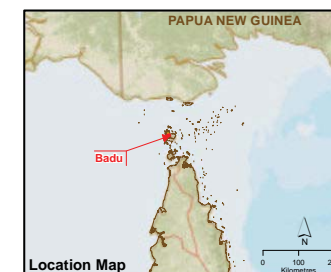
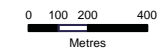
Note:
An airfield is not trunk infrastructure for the purposes of the LGIP. This item has been included for information purposes only.

Data Sources:
Unless stated below all landuse, road, or natural feature data shown is from the Strategic Landuse Plan (SLUP) by the RPS Group 2010.
Community Consultation 2013: Local Names, Places and identified facilities Queensland Dept. Natural Resources and Environment: Imagery.
LGA Boundaries: Terrain data and Flooding layers
AECOM: all strategic framework, zoning and local area plan data is modified from the SLUP and DNRW source data.
James Cook University: Coastal Hazard and Coastal Inundation where shown.
Location Map Base Data:
Sources: Esri, HERE, DeLorme, USGS, Intermap, increment P Corp., NRCAN, Esri Japan, METI, Esri China (Hong Kong), Esri (Thailand), Navteq, © OpenStreetMap contributors, and the GIS User Community
Main Map Imagery:
Badu Village 60 cm Satellite Imagery © Quickbird, 2006
Disclaimer:
AECOM does not warrant the accuracy or completeness of information displayed in this map and any person using it does so at their own risk. AECOM shall bear no responsibility or liability for any errors, faults, defects, or omissions in the information. Where not part of the DCDB, internal lot boundaries have been derived based on visible occupation of land from 2011, 2012 and 2013 orthorectified aerial imagery and CAD Detail Survey. They should not be considered spatially accurate. (Derived Lot Boundary)

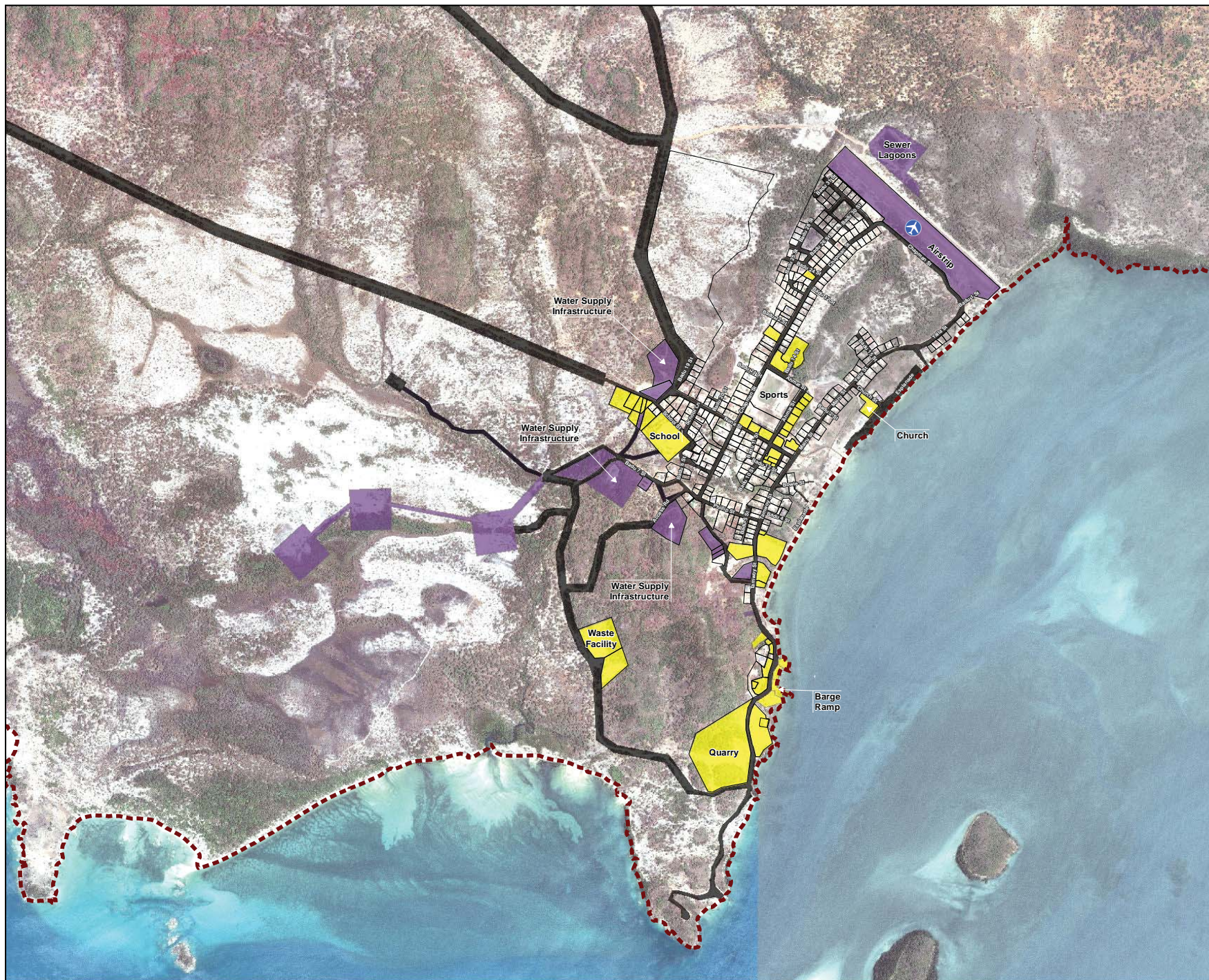


Projection:GDA 1994 MGA Zone 54 Datum:GDA 1994

Approx. Scale @A3 1:18,000




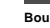




Local Government Infrastructure Plan
Transport Infrastructure – Badu Township



LEGEND

Local Government Infrastructure Plan

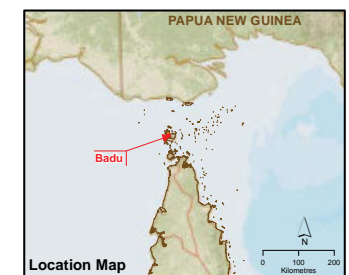
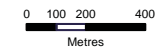
-  Airstrip
-  Community
-  Infrastructure
-  Road Infrastructure
- Boundaries and Features**
-  Cadastral Boundaries
-  LGA

Note:
Items such as airfields, helipads, electricity infrastructure, telecommunications infrastructure, schools, churches, cemeteries, quarries and local stores etc. are not trunk infrastructure for the purposes of the LGIP. These items have been included for information purposes only.

Data Sources:
Unless stated below all landuse, road, or natural feature data shown is from the Strategic Landuse Plan (SLUP) by the RPS Group 2010.
Community Consultation 2013: Local Names, Places and identified facilities Queensland Dept. Natural Resources and Environment: Imagery, LGA Boundaries, Terrain data and Flooding layers
AECOM: all strategic framework, zoning and local area plan data is modified from the SLUP and DNRW source data.
James Cook University: Coastal Hazard and Coastal Inundation where shown.
Location Map Base Data:
Sources: Esri, HERE, DeLorme, USGS, Intermap, increment P Corp., NRCAN, Esri Japan, METI, Esri China (Hong Kong), Esri (Thailand), Mapbox, © OpenStreetMap contributors, and the GIS User Community
Main Map Imagery:
Badu Village 60 cm Satellite Imagery © Quickbird, 2006
Disclaimer:
AECOM does not warrant the accuracy or completeness of information displayed in this map and any person using it does so at their own risk. AECOM shall bear no responsibility or liability for any errors, faults, defects, or omissions in the information. Where not part of the DCDB, internal lot boundaries have been derived based on visible occupation of land from 2011, 2012 and 2013 orthorectified aerial imagery and CAD Detail Survey. They should not be considered spatially accurate. (Derived Lot Boundary)

Projection:GDA 1994 MGA Zone 54 Datum:GDA 1994

Approx. Scale @A3 1:18,000



Local Government Infrastructure Plan
Community and Infrastructure – Badu Township