

SC3.7 Kirriri (Hammond) Island maps

LEGEND

Local Government Infrastructure Plan

--- Rising Main

— Water Infrastructure

— Boundaries and Features

▭ Cadastral Boundaries

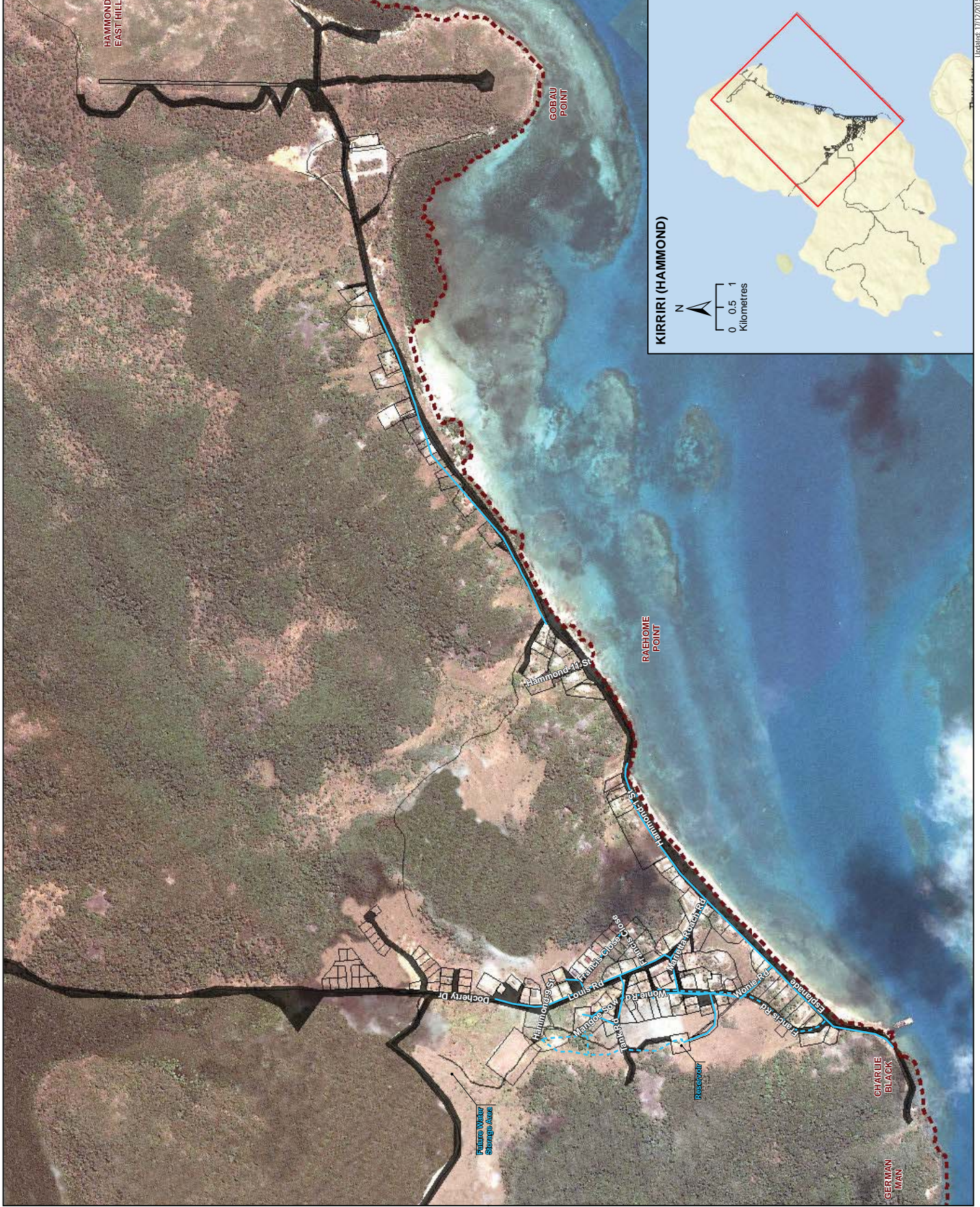
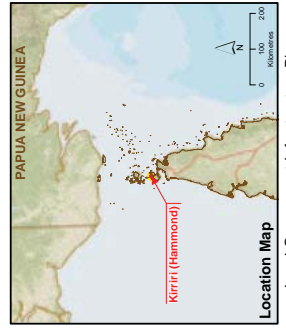
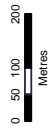
▭ Roads

▭ Local Government Area

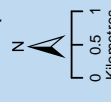
Data Sources:
Unless stated below all landscape, road, or natural feature data shown on this map were derived from the following sources:
Cadastral Data: 2013 Local Name, Place and Identified Facilities
Cadastral Data: Natural Resources and Environment Imagery
AECOM all street names and zoning types were derived from a vector
model from the SLUP and DNRM source data.
Vector Data: ESRI Online, Sources: Sources: Esri, HERE, DeLorme,
USGS, Intermap, increment P Corp., NRCAN, Esri, Japan, METI, Esri China
(Hong Kong), Swisstopo, GEBCO, CNRS, IGN, NOAA, GEBCO, Esri, China
(Hong Kong), Esri (Thailand), TomTom, Mapbox, Esri, DeLorme,
Swisstopo, Esri, Swisstopo, Esri, Swisstopo, Esri, Swisstopo, Esri,
Mapbox, Esri, Swisstopo, Esri, Swisstopo, Esri, Swisstopo, Esri,
Hammond from Satellite Imagery © QuickBird, 2006
AECOM does not warrant the accuracy or completeness of information displayed in this map
and any person using it does so at their own risk. AECOM shall bear no responsibility or
liability for any errors or omissions in this map. All boundaries have been derived based on visible
occupancy of land from
2011, 2012 and 2013 orthorectified aerial imagery and CAD Street Survey. They should not
be considered spatially accurate. (derived from boundary)

Projection: GDA 1991 MGA Zone 54 Datum: GDA 1991



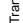
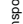
Approx. Scale @ A3 1:10,000



KIRRIRI (HAMMOND)



LEGEND

- Local Government Infrastructure Plan**
-  Transport Infrastructure
 -  Boundaries and Features
 -  Cadastral Boundaries
 -  Local Government Area

Note: This field is not track infrastructure for the purpose of the LGIP. This item has been included for information purposes only.

Data Sources:
Unless stated below all landscape, road, or natural feature data shown on this map were derived from the following sources:
Community Data: Natural Resources and Environment: Imagery, Cadastral Data: Natural Resources and Environment: Imagery, AECOM all street names and road numbering information is derived from the SAIP and DNRM source data.
VOCAL: Map Data @ ESRI Online. Sources: Sources: Esri, HERE, DeLorme, USGS, Intermap, increment P Corp., NRCAN, Esri Japan, METI, Esri China (Hong Kong), Esri (Thailand), TomTom, Mapbox, © OpenStreetMap contributors, © CB User Community
Aerial Imagery: Hammond from Satellite Imagery © QuickBird, 2006
AECOM does not warrant the accuracy or completeness of information displayed in this map and any person using it does so at their own risk. AECOM shall bear no responsibility or liability for any errors or omissions in the information shown on this map. All boundaries shown on this map have been derived based on visible occupation of land from 2011, 2012 and 2013 orthorectified aerial imagery and CAD Detail Survey. They should not be considered spatially accurate. (derived from boundary)

Projection:GDA 1991 MGA Zone 54 Datum:GDA 1991
Approx. Scale @A3 1:10,000
0 50 100 200
Metres

