

## SC3.8 Kubin (on Moa Island) maps



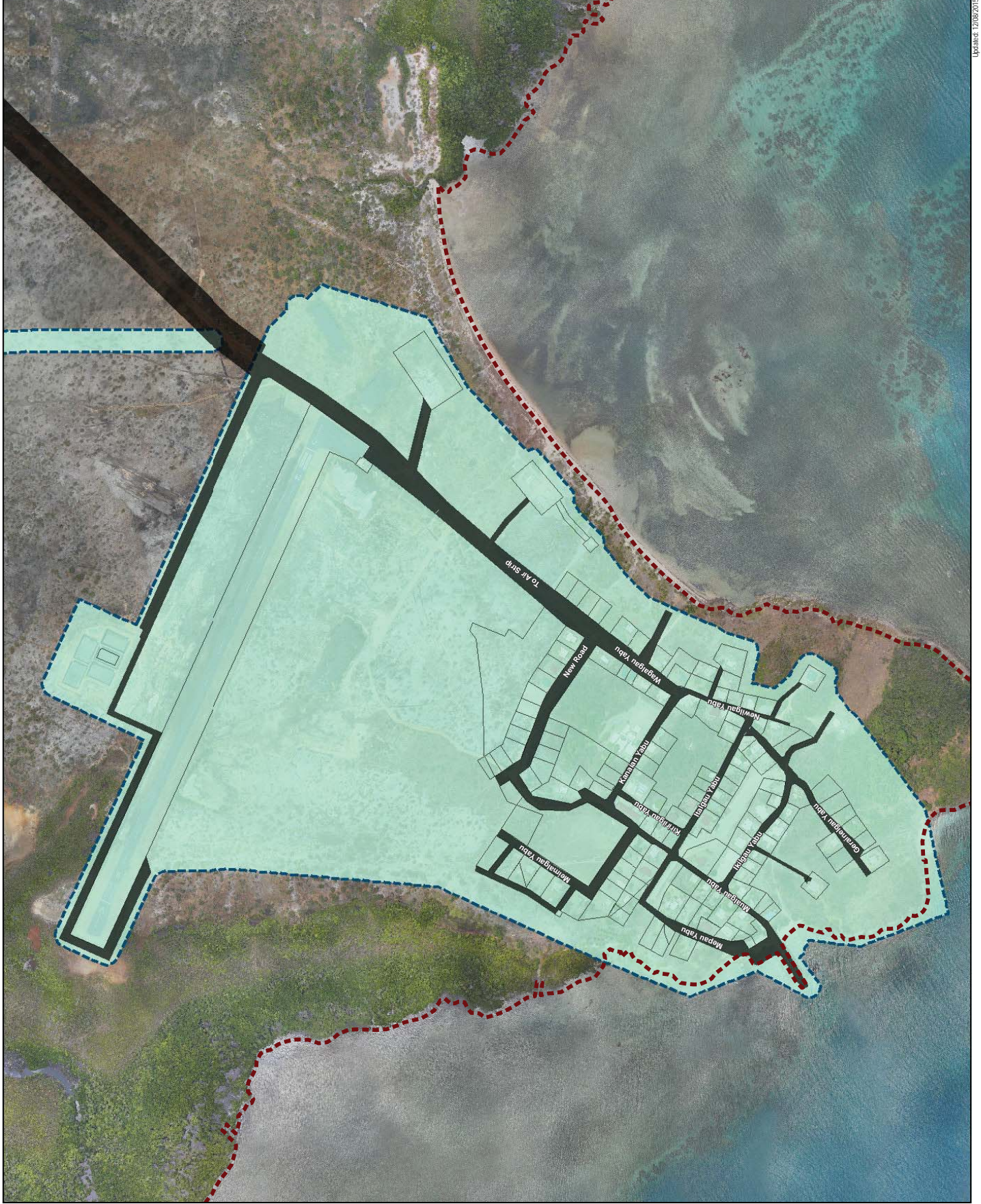
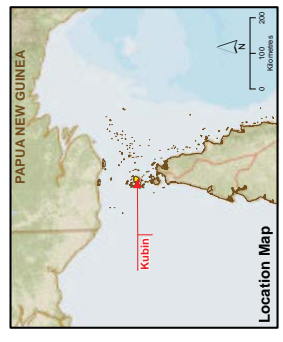
**LEGEND**

- Local Government Infrastructure Plan**
- LGIP Area
  - Boundaries and Features**
  - Cadastral Boundaries
  - Road
  - LGA

**Data Sources:**  
 Unless stated below all landuse, road, or natural feature data shown is from the Strategic Landuse Plan (SLUP) by the RPS Group 2010. Community Consultation 2013: Local Names, Places and Identified Facilities. Local Government Infrastructure Plan (LGIP) by the RPS Group 2010. LGA Boundaries and Features and Cadastral Imagery.  
**AECOM:** all strategic framework, zoning and local area plan data is modified from the SLUP and DMRM source data.  
**Blas.Mike.Insight**  
 World Street Map © ESRI Online, Source: Esri, HERE, DeLorme, USGS, World Imagery © DigitalGlobe, GeoEye, Earthstar (Australia), CNRS, IGN, Karteg, Esri (Thailand), TomTom, Mapbox, Mapy.cz, © OpenStreetMap contributors, and the GIS User Community  
**Main.Mike.Insight**  
 Kubin Island 10 cm Mosaic Imagery © SIRI, 2011

**Disclaimer:**  
 AECOM does not warrant the accuracy or completeness of information displayed in this map and any person using it does so at their own risk. AECOM shall bear no responsibility or liability for any errors, faults, omissions, or misstatements in this information. Where not part of the CCMA, third party boundaries have been derived based on visible occupation of land from aerial photography and may not be accurate. AECOM does not warrant the accuracy of third party data considered separately or in combination with this map. They should not be considered separately or in combination with this map.

Projections:GDA 1991 MGA Zones 54 Datum:GDA 1991  
 Approx. Scale @A3 1:6,500  
 0 50 100 200  
 Metres



**LEGEND**

**Local Government Infrastructure Plan**

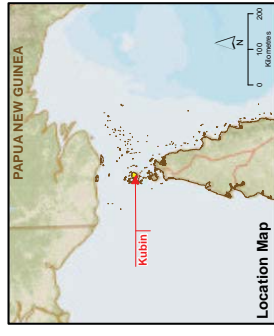
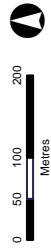
-  Water Infrastructure
-  Boundaries and Features
-  Cadastral Boundaries
-  Road
-  LGA

**Data Sources:**  
Unless stated below all landuse, road, or natural feature data shown is from the Strategic Landuse Plan (SLUP) by the RIPS Group 2010. Community Consultation 2013: Local Names, Places and Identified Facilities.  
Local Government Infrastructure Plan: Aerial Imagery, Imagery, LGA Boundaries, Cadastral Boundaries, and Local Area Plan Data.  
AECOM: all strategic framework, zoning and local area plan data is modified from the SLUP and DNRM source data.  
Blast.Mike Imagery  
World Street Map © ESRI Online, Source: Esri, HERE, DeLorme, USGS, NAVTEQ, Swatch 3D © Swatch Ltd., © OpenStreetMap contributors, and the GIS User Community  
Main.Mike Imagery  
Kubin Island 10 cm Mosaic Imagery © SIRI, 2011

**Disclaimer:**  
AECOM does not warrant the accuracy or completeness of information displayed in the map and any person using it does so at their own risk. AECOM shall bear no responsibility or liability for any errors, omissions, or inaccuracies in the information. Where not part of the LGA, the land ownership information is based on the information provided by the LGA. The LGA should not be considered as a warranty of any kind. They should not be considered as a warranty of any kind.

Projection: GDA 1991 MGA Zones 51 Datum: GDA 1991

Approx. Scale @A3 1:6,500



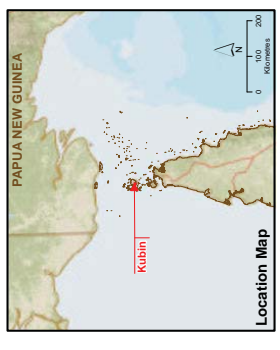


- LEGEND**
- Local Government Infrastructure Plan**
- Sewer Manhole
  - Sewer Infrastructure
  - Rising Main
  - Boundaries and Features
  - ▭ Cadastral Boundaries
  - ▭ Road
  - ▭ LGA

**Data Sources:**  
 Unless stated below all landuse, road, or natural feature data shown is from the Strategic Landuse Plan (SLUP) by the RIPS Group 2010. Community Consultation 2013: Local Names, Places and Identified Facilities. Local Government Infrastructure Plan (LGIPI) by the RIPS Group 2010. LGA Boundaries and Features from the Department of Lands and Planning, Queensland Government. AECOM: all strategic framework, zoning and local area plan data is modified from the SLUP and DNRM source data. Base.Mike Imagery © ESRI Online, Source: Esri, HERE, DeLorme, USGS, World Street Map © ESRI Online, Source: Esri, HERE, DeLorme, USGS, Swire, Nippon, NITN, © OpenStreetMap contributors, and the GIS User Community. Main.Mike Imagery © OpenStreetMap contributors, and the GIS User Community. Kubin Island 10 cm Mosaic Imagery © SIRI, 2011

**Disclaimer:**  
 AECOM does not warrant the accuracy or completeness of information displayed in the map and any person using it does so at their own risk. AECOM shall bear no responsibility or liability for any errors, faults, defects, or omissions in the information. Where not part of the CDIA, third party information has been derived based on visible occupation of land from aerial photography and is not guaranteed to be accurate. Aerial photography should not be considered as a primary data source (Department of State).

Projection: GDA 1991, MGA Zone 51 Datum: GDA 1991  
 Approx. Scale @A3 1:6,500  
 0 50 100 200  
 Metres



**Location Map**  
 Local Government Infrastructure Plan  
 Sewer Infrastructure  
 Moa Island (Kubin Township)



**LEGEND**  
Local Government Infrastructure Plan

- Airstrip
- Road Infrastructure
- Boundaries and Features
- Cadastral Boundaries
- LGA

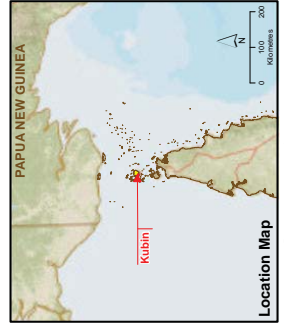
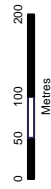
**Note:**  
An airfield is not trunk infrastructure for the purposes of the LGIP. This item has been included for information purposes only.

**Data Sources:**  
Unless stated below all landuse, road, or natural feature data shown is from the Strategic Landuse Plan (SLUP) by the RPS Group 2010. Community Consultation 2013: Local Names, Places and Identified Facilities.  
Road Infrastructure: OpenStreetMap, Aerial Imagery, and cadastral boundaries.  
LGA Boundaries: Land Use and Planning Information System (LUPIS).  
AECOM: all strategic framework, zoning and local area plan data is modified from the SLUP and DNRM source data.  
Blast.Mike Imagery  
World Street Map © ESRI Online, Source: Esri, HERE, DeLorme, USGS, NAVTEQ, Swatch 3D © Swatch Ltd., © OpenStreetMap contributors, and the GIS User Community  
Main.Mike Imagery  
Kubin Island 10 cm Mosaic Imagery © SIRI, 2011

**Disclaimer:**  
AECOM does not warrant the accuracy or completeness of information displayed in the map and any person using it does so at their own risk. AECOM shall bear no responsibility or liability for any errors, omissions, or inaccuracies in the information. Where not part of the DCIA, third party information has been derived based on visible occupation of land from aerial photography and is not warranted in accuracy, use thereof is advised. They should not be considered spatially accurate (dependent on accuracy).

Projection:GDA 1994 MGA Zones 51 Datum:GDA 1994

Approx. Scale @A3 1:6,500



**LEGEND**

**Local Government Infrastructure Plan**

- Airstrip
- Community
- Infrastructure
- Road Infrastructure
- Boundaries and Features
- Cadastral Boundaries
- LGA

**Notes:** such as airfields, helipads, electricity infrastructure, telecommunications infrastructure, schools, churches, cemeteries, quarries and local stores etc. are not trunk infrastructure for the purposes of the LGIP. These items have been included for information purposes only.

**Data Sources:** The following all include, road, or natural feature data shown is from the Strategic Landuse Plan (SLUP) by the RPS Group 2010, Community Consultation 2013, Local Names, Places and Identified Facilities Database, Natural Resources and Environment Imagery, Cadastral Data, Terrain data and flooding layers. Aerial imagery is modified from the SLUP and DNRM source data. James Cook University Coastal Hazard and Coastal Inundation where shown.

**Base Map Imagery:** ESRI Online, Google Earth, HERE, DeLorme, USGS, Intermap, iFlycatcher, GEBCO, CNES, Airphoto, IGN, France, Airbus, IGN, Intermap, Inc., Swire, GEBCO, Esri, DeLorme, NAVTEQ, SwireHaworth, Bing, Swire, Esri, (Thailand), TomTom, Mapbox, © OpenStreetMap contributors, and the GIS User Community

**Main Map Imagery:** Kubin Island 10 cm Mosaic Imagery © SISF, 2011

**Disclaimer:** AECOM does not warrant the accuracy or completeness of information displayed in the map and any person using it does so at their own risk. AECOM shall bear no responsibility or liability for any errors, omissions, or inaccuracies in the information. When not part of the project, AECOM shall not be held responsible for any information or data obtained from 2011-2012 and 2013 correspondence and other sources. AECOM shall not be held responsible for any information or data obtained from 2011-2012 and 2013 correspondence and other sources. AECOM shall not be held responsible for any information or data obtained from 2011-2012 and 2013 correspondence and other sources.

Projection: GDA 1991 MGA Zones 51 Datum: GDA 1991

Approx. Scale @A3 1:6,500

