

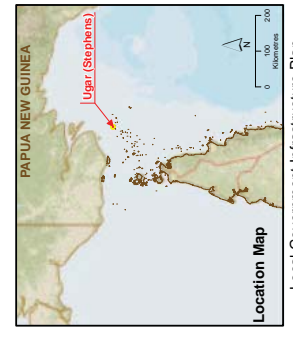
SC3.15 Ugar (Stephens) Island maps

LEGEND

Local Government Infrastructure Plan

- Sewer Infrastructure
- ▬ Road
- ▬ Cadastral Boundaries
- ▬ LGA

Data Sources:
Unless stated below all features, road, or natural feature data shown in this map are sourced from the Ugar Infrastructure Plan (SUUP) by the RP'S Group 2010.
Cadastral Boundaries:
Surveyed by Bruce Mill, 2015
Community, Council, and Identified Facilities:
Community, Council, and Identified Facilities
Local Government Infrastructure Plan:
Community, Council, and Identified Facilities
LGA Boundaries: Torres Strait Island Regional Council
Local Area Plot Data:
Data sourced from the SUUP and DMR source data.
Jurisdiction: Torres Strait Island Regional Council
Map: Juma Socio University, Coastal Hazard and Coastal Inundation, where shown.
Projection: GDA 1984 UTM Zone 51, Datum: GDA 1984
Scale: Approx. Scale @ A3 1:3,000
Projection: GDA 1984 UTM Zone 51, Datum: GDA 1984
Scale: Approx. Scale @ A3 1:3,000
Scale Bar: 0 15 30 60 Metres



Local Government Infrastructure Plan
Sewer Infrastructure – Ugar Island



Note:

- Ugar is not currently serviced by a reticulated sewerage system.
- All community sewage is treated via septic tanks and underground absorption techniques.
- The septic tank systems should function appropriately provided they are correctly designed, installed, and maintained and that future housing blocks have sufficient areas allocated for the underground trenches.
- There are no immediate plans to construct a reticulated sewerage system at Ugar, at least in the short term.
- Ugar has limited space available for waste disposal, past the help, past the help, past the help.
- The current waste management practice is a basic trench, burn and bury operation.

Source: Sustainable Land Use Plan (SUUP) 2010, page 8

LEGEND

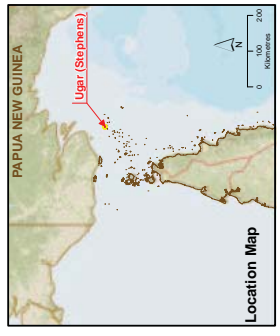
Local Government Infrastructure Plan

-  Helipad
-  Transport Infrastructure
-  Cadastral Boundaries
-  LGA

Note:
An airfield is not trunk infrastructure for the purposes of the LPIP. This item has been included for information purposes only.

Data Sources:
Unless stated below all landuse, road, or natural feature data shown is from the Strategic Landscape Plan (SLIP) by the PSP Group 2010.
Sedastat/Boundaries: 2015
Community Consultation 2013: Local Names, Places and Identified facilities
Queensland Dept. Natural Resources and Environment: Imagery,
LGA Boundaries, Terrain data and Flood layers
AECOM: all strategic framework, zoning and local area plan data is shown.
James Cook University: Coastal Hazard and Coastal inundation where shown.
Ecoston Drive/Map: (c) State of Queensland (Department of Environment and Heritage Protection), 2014
Location/Map/Background: (c) Bing, Sources: Esri, HERE, DeLorme, USGS, Intermap, increment P Corp., NRCAN, Esri Japan, METI, Esri China (Hong Kong), Esri (Thailand), TomTom, Mapbox, © OpenStreetMap contributors, and the GIS User Community
Map/Mile/Imagery: Map (Shirley) 10 cm Mercator © SIRIS, 2011
Note: AECOM does not warrant the accuracy or completeness of information displayed in this map and any person using it does so at their own risk. AECOM shall bear no responsibility or liability for any errors, faults, defects, or omissions in the information. Where not part of the SLIP, items or boundaries have been shown based on visible occupation of land from aerial photography and field survey. They should not be considered spatially accurate (showed for boundary).

Projection: GDA 1984/LGA Zones 54, Datum: GDA 1984
Approx. Scale @A3 1:3,000
0 15 30 60
Metres






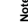


Local Government Infrastructure Plan
Transport Infrastructure – Ugar Island



LEGEND

Local Government Infrastructure Plan

-  Helipad
-  Community
-  Infrastructure
-  Road Infrastructure
-  Cadastral Boundaries
-  LGA

Notes: Items such as airfields, helipads, electricity infrastructure, telecommunications infrastructure, schools, churches, cemeteries, quarries and local stores etc. are not trunk infrastructure for the purposes of the LGIP. These items have been included for information purposes only.

Data Sources: This map was prepared by all-terrain, road, or natural feature data shown in the Strategic Land Use Plan (SLUP) by the RPS Group 2010.

Cadastral Boundaries: Surveyed by Bruce Mott, 2015

Community, Cadastral, and Road Infrastructure: Local Names, Places and Identified facilities Community, Cadastral, and Road Infrastructure Imagery, 2015

LGA Boundaries: Local Government Areas (LGA) boundaries, terrain data and floodplains

ACCOM: all strategic framework, zoning and local area plan data is modified from the SLUP and DNRM source data.

James Cook University: Coastal Hazard and Coastal Inundation where from: Bruce Adams, (c) State of Queensland (Department of Environment and Heritage Protection), 2014

Localisation, Base Data: Localisation, Base Data

World Street Map: © ESRI Online, Sources: Esri, HERE, DeLorme, USGS, Intermap, increment P Corp., GEBCO, Esri Japan, METI, Esri China (Hong Kong), Swisstopo, Mapbox Labs, Swatch Inc., © OpenStreetMap contributors, and the GIS User Community

Map Data Imagery: Ugar (Stephens) 10 cm Mosaic © SISPR, 2011

Disclaimer: ACCOM does not warrant the accuracy or completeness of information employed in this map. ACCOM shall not be liable for any errors, omissions, or inaccuracies in this information. Where not part of the DNRM, items for boundaries have been derived based on visible occupation of land from 2011, 2012 and 2013 orthorectified aerial imagery and CAD Detail Survey. They should not be considered spatially accurate. (Derived from boundary)

Projection: GDA 1984 UTM Zone 54, Datum: GDA 1984
Approx. Scale @ A3 1:3,000
0 15 30 60
Metres

